

DATASHEET

UBLCP1 Rabbit Polyclonal Antibody

CAT. NO. APA17235

KEY FEATURES

| | | | |
|---------------|---|---------------|---------------------|
| Target | UBLCP1 | Source / Host | Rabbit |
| Reactivity | Human, Mouse, Rat | Clonality | Polyclonal |
| Applications | WB | Conjugation | Unconjugated |
| Form / Buffer | Liquid in 0.42% Potassium phosphate, 0.87% Sodium chloride, pH 7.3, 30% glycerol, and 0.01% sodium azide. | | Storage at -20°C |

BACKGROUND

Dephosphorylates 26S nuclear proteasomes, thereby decreasing their proteolytic activity . Recruited to the 19S regulatory particle of the 26S proteasome through its interaction with 19S component PSMD2/RPN1 . Once recruited, dephosphorylates 19S component PSMC2/RPT1 which impairs PSMC2 ATPase activity and disrupts 26S proteasome assembly . Has also been reported to stimulate the proteolytic activity of the 26S proteasome .

APPLICATION

To ensure optimal assay performance, AREX recommends conducting reagent titration tailored to each testing system for optimal detection results.

| | |
|----|----------------|
| WB | 1:500 - 1:2000 |
|----|----------------|

*Results are sample-specific. Please refer to your local assay conditions and test parameters for reference.

PRODUCT OVERVIEW

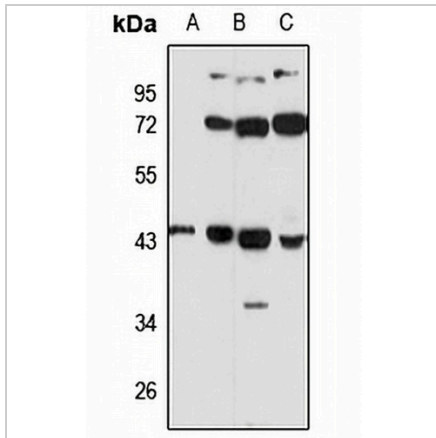
| | |
|-------------------|---|
| Description | Rabbit polyclonal antibody to UBLCP1 |
| Specificity | Recognizes endogenous levels of UBLCP1 protein |
| Antibody Type | Primary antibody |
| Immunogen | Recombinant fusion protein of human UBLCP1. The exact sequence is proprietary. |
| Purification | The antibody was purified by immunogen affinity chromatography. |
| Molecular Weight | Predicted: 36 kD; Observed: 45 kD |
| Form/Buffer | Liquid in 0.42% Potassium phosphate, 0.87% Sodium chloride, pH 7.3, 30% glycerol, and 0.01% sodium azide. |
| Alternative Names | Ubiquitin-like domain-containing CTD phosphatase 1; Nuclear proteasome inhibitor UBLCP1 |
| Gene Symbol | UBLCP1 |
| Entrez Gene | 134510(Human); 79560(Mouse); 360514(Rat) |
| SwissProt | Q8WVY7(Human); Q8BGR9(Mouse); Q5FWT7(Rat) |

*AREX continuously optimizes our products. Webpage content may not reflect the latest updates. For inquiries, please contact info@arexbio.com or your local distributor.

*Clone Number, Reactivity, Source/Host and Clonality can be found in the product name and Key Features section above.

DATASHEET**UBLCP1 Rabbit Polyclonal Antibody**

CAT. NO. APA17235

DATA

Western blot analysis of UBLCP1 expression in A549 (A), HeLa (B), mouse brain (C) whole cell lysates. (Predicted band size: 36 kDa; Observed band size: 45 kDa)

STORAGE

Store at 4°C short term. For long term storage, store at -20°C, avoiding freeze/thaw cycles.

NOTE

For Research Use Only. Not for diagnostic, therapeutics, prophylactic or in vivo use.