

DATASHEET

UBN2 Rabbit Polyclonal Antibody

CAT. NO. APA17236

KEY FEATURES

Target	UBN2	Source / Host	Rabbit
Reactivity	Human, Mouse	Clonality	Polyclonal
Applications	WB	Conjugation	Unconjugated
Form / Buffer	Liquid in 0.42% Potassium phosphate, 0.87% Sodium chloride, pH 7.3, 30% glycerol, and 0.01% sodium azide.		Storage at -20°C

BACKGROUND

Ubinuclein-2 (UBN2). Belongs to the ubinuclein family Tissue specificity: Expressed in several cell lines tested, including primary and transformed cell lines

APPLICATION

To ensure optimal assay performance, AREX recommends conducting reagent titration tailored to each testing system for optimal detection results.

WB	1:500 - 1:2000
----	----------------

*Results are sample-specific. Please refer to your local assay conditions and test parameters for reference.

PRODUCT OVERVIEW

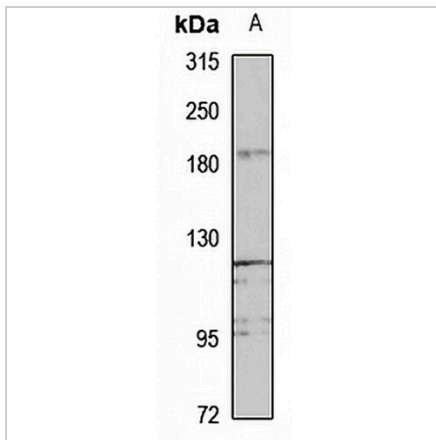
Description	Rabbit polyclonal antibody to UBN2
Specificity	Recognizes endogenous levels of UBN2 protein
Antibody Type	Primary antibody
Immunogen	KLH-conjugated synthetic peptide of human UBN2. The exact sequence is proprietary.
Purification	The antibody was purified by immunogen affinity chromatography.
Molecular Weight	Predicted: 130; Observed: 190 kD
Form/Buffer	Liquid in 0.42% Potassium phosphate, 0.87% Sodium chloride, pH 7.3, 30% glycerol, and 0.01% sodium azide.
Alternative Names	KIAA2030; Ubinuclein-2
Gene Symbol	UBN2
Entrez Gene	254048(Human); 320538(Mouse)
SwissProt	Q6ZU65(Human); Q80WC1(Mouse)

*AREX continuously optimizes our products. Webpage content may not reflect the latest updates. For inquiries, please contact info@arexbio.com or your local distributor.

*Clone Number, Reactivity, Source/Host and Clonality can be found in the product name and Key Features section above.

DATASHEET**UBN2 Rabbit Polyclonal Antibody**

CAT. NO. APA17236

DATA

Western blot analysis of UBN2 expression in HEK293T (A) whole cell lysates. (Predicted band size: 130; 131; 141 kD; Observed band size: 190 kD)

STORAGE

Store at 4°C short term. For long term storage, store at -20°C, avoiding freeze/thaw cycles.

NOTE

For Research Use Only. Not for diagnostic, therapeutics, prophylactic or in vivo use.