

DATASHEET

UNCL Rabbit Polyclonal Antibody

CAT. NO. APA17248

KEY FEATURES

Target	UNCL	Source / Host	Rabbit
Reactivity	Human, Mouse, Rat	Clonality	Polyclonal
Applications	WB	Conjugation	Unconjugated
Form / Buffer	Liquid in 0.42% Potassium phosphate, 0.87% Sodium chloride, pH 7.3, 30% glycerol, and 0.01% sodium azide.		Storage at -20°C

BACKGROUND

Involved in the cell surface expression of neuronal nicotinic receptors . Binds RNA .

APPLICATION

To ensure optimal assay performance, AREX recommends conducting reagent titration tailored to each testing system for optimal detection results.

WB	1:500 - 1:2000
----	----------------

*Results are sample-specific. Please refer to your local assay conditions and test parameters for reference.

PRODUCT OVERVIEW

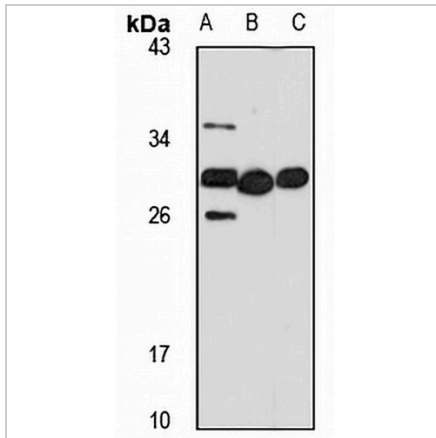
Description	Rabbit polyclonal antibody to UNCL
Specificity	Recognizes endogenous levels of UNCL protein
Antibody Type	Primary antibody
Immunogen	KLH-conjugated synthetic peptide of human UNCL. The exact sequence is proprietary.
Purification	The antibody was purified by immunogen affinity chromatography.
Molecular Weight	Predicted: 30 kD; Observed: 30 kD
Form/Buffer	Liquid in 0.42% Potassium phosphate, 0.87% Sodium chloride, pH 7.3, 30% glycerol, and 0.01% sodium azide.
Alternative Names	UNCL; Protein unc-50 homolog; Periodontal ligament-specific protein 22; PDLs22; Protein GMH1 homolog; hGMH1; Uncoordinated-like protein
Gene Symbol	UNC50
Entrez Gene	25972(Human); 67387(Mouse); 192356(Rat)
SwissProt	Q53HI1(Human); Q9CQ61(Mouse); O55227(Rat)

*AREX continuously optimizes our products. Webpage content may not reflect the latest updates. For inquiries, please contact info@arexbio.com or your local distributor.

*Clone Number, Reactivity, Source/Host and Clonality can be found in the product name and Key Features section above.

DATASHEET**UNCL Rabbit Polyclonal Antibody**

CAT. NO. APA17248

DATA

Western blot analysis of UNCL expression in A549 (A), mouse kidney (B), rat kidney (C) whole cell lysates. (Predicted band size: 30 kD; Observed band size: 30 kD)

STORAGE

Store at 4°C short term. For long term storage, store at -20°C, avoiding freeze/thaw cycles.

NOTE

For Research Use Only. Not for diagnostic, therapeutics, prophylactic or in vivo use.