

DATASHEET

USE1 Rabbit Polyclonal Antibody

CAT. NO. APA17256

KEY FEATURES

Target	USE1	Source / Host	Rabbit
Reactivity	Human, Mouse	Clonality	Polyclonal
Applications	WB, IF/ICC	Conjugation	Unconjugated
Form / Buffer	Liquid in 0.42% Potassium phosphate, 0.87% Sodium chloride, pH 7.3, 30% glycerol, and 0.01% sodium azide.		Storage at -20°C

BACKGROUND

SNARE that may be involved in targeting and fusion of Golgi-derived retrograde transport vesicles with the ER.

APPLICATION

To ensure optimal assay performance, AREX recommends conducting reagent titration tailored to each testing system for optimal detection results.

WB	1:500 - 1:2000
IF/ICC	1:50 - 1:200

*Results are sample-specific. Please refer to your local assay conditions and test parameters for reference.

PRODUCT OVERVIEW

Description	Rabbit polyclonal antibody to USE1
Specificity	Recognizes endogenous levels of USE1 protein
Antibody Type	Primary antibody
Immunogen	Recombinant fusion protein of human USE1. The exact sequence is proprietary.
Purification	The antibody was purified by immunogen affinity chromatography.
Molecular Weight	Predicted: 15; Observed: 29 kD
Form/Buffer	Liquid in 0.42% Potassium phosphate, 0.87% Sodium chloride, pH 7.3, 30% glycerol, and 0.01% sodium azide.
Alternative Names	USE1L; Vesicle transport protein USE1; Putative MAPK-activating protein PM26; USE1-like protein; p31
Gene Symbol	USE1
Entrez Gene	55850(Human); 67023(Mouse)
SwissProt	Q9NZ43(Human); Q9CQ56(Mouse)

*AREX continuously optimizes our products. Webpage content may not reflect the latest updates. For inquiries, please contact info@arexbio.com or your local distributor.

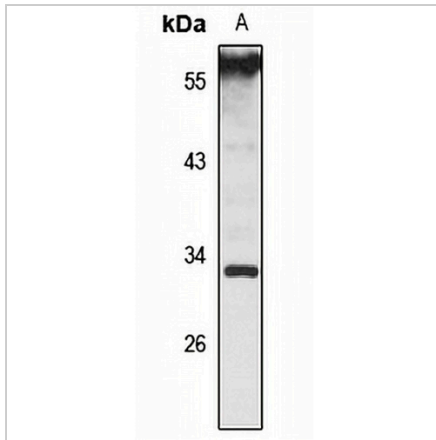
*Clone Number, Reactivity, Source/Host and Clonality can be found in the product name and Key Features section above.

DATASHEET

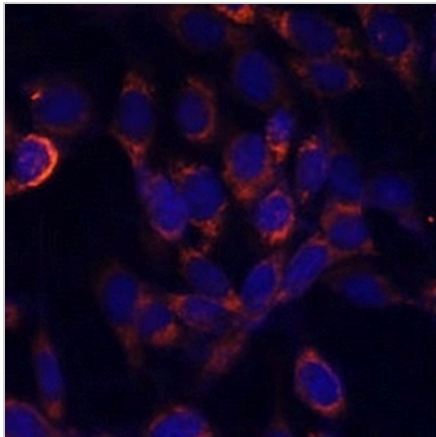
USE1 Rabbit Polyclonal Antibody

CAT. NO. APA17256

DATA



Western blot analysis of USE1 expression in MCF7 (A) whole cell lysates. (Predicted band size: 15; 16; 29 kD; Observed band size: 29 kD)



Immunofluorescent analysis of USE1 staining in NIH3T3 cells. Formalin-fixed cells were permeabilized with 0.1% Triton X-100 in TBS for 5-10 minutes and blocked with 3% BSA-PBS for 30 minutes at room temperature. Cells were probed with the primary antibody in 3% BSA-PBS and incubated overnight at 4 °C in a humidified chamber. Cells were washed with PBST and incubated with a Alexa Fluor 594-conjugated secondary antibody (red) in PBS at room temperature in the dark.

STORAGE

Store at 4°C short term. For long term storage, store at -20°C, avoiding freeze/thaw cycles.

NOTE

For Research Use Only. Not for diagnostic, therapeutics, prophylactic or in vivo use.