

DATASHEET

CRLZ1 Rabbit Polyclonal Antibody

CAT. NO. APA17270

KEY FEATURES

Target	CRLZ1	Source / Host	Rabbit
Reactivity	Human, Mouse, Rat	Clonality	Polyclonal
Applications	WB	Conjugation	Unconjugated
Form / Buffer	Liquid in 0.42% Potassium phosphate, 0.87% Sodium chloride, pH 7.3, 30% glycerol, and 0.01% sodium azide.		Storage at -20°C

BACKGROUND

Essential for gene silencing: has a role in the structure of silenced chromatin. Plays a role in the developing brain . Part of the small subunit (SSU) processome, first precursor of the small eukaryotic ribosomal subunit. During the assembly of the SSU processome in the nucleolus, many ribosome biogenesis factors, an RNA chaperone and ribosomal proteins associate with the nascent pre-rRNA and work in concert to generate RNA folding, modifications, rearrangements and cleavage as well as targeted degradation of pre-ribosomal RNA by the RNA exosome processome, first precursor of the small eukaryotic ribosomal subunit.

APPLICATION

To ensure optimal assay performance, AREX recommends conducting reagent titration tailored to each testing system for optimal detection results.

WB	1:500 - 1:2000
----	----------------

*Results are sample-specific. Please refer to your local assay conditions and test parameters for reference.

PRODUCT OVERVIEW

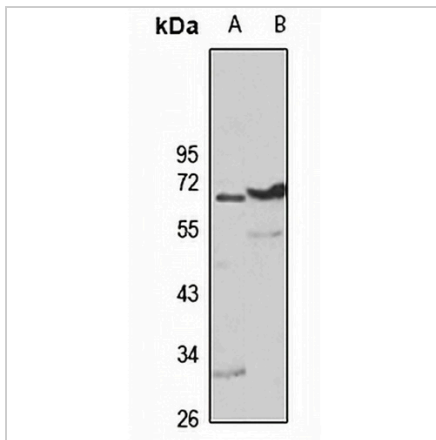
Description	Rabbit polyclonal antibody to CRLZ1
Specificity	Recognizes endogenous levels of CRLZ1 protein
Antibody Type	Primary antibody
Immunogen	Recombinant fusion protein of human CRLZ1. The exact sequence is proprietary.
Purification	The antibody was purified by immunogen affinity chromatography.
Molecular Weight	Predicted: 54 kD; Observed: 65 kD
Form/Buffer	Liquid in 0.42% Potassium phosphate, 0.87% Sodium chloride, pH 7.3, 30% glycerol, and 0.01% sodium azide.
Alternative Names	CRLZ1; SAS10; Something about silencing protein 10; Charged amino acid-rich leucine zipper 1; CRL1; Disrupter of silencing SAS10; UTP3 homolog
Gene Symbol	UTP3
Entrez Gene	57050(Human); 65961(Mouse); 305258(Rat)
SwissProt	Q9NQZ2(Human); Q9JI13(Mouse); Q6AXX4(Rat)

*AREX continuously optimizes our products. Webpage content may not reflect the latest updates. For inquiries, please contact info@arexbio.com or your local distributor.

*Clone Number, Reactivity, Source/Host and Clonality can be found in the product name and Key Features section above.

DATASHEET**CRLZ1 Rabbit Polyclonal Antibody**

CAT. NO. APA17270

DATA

Western blot analysis of CRLZ1 expression in A549 (A), mouse thymus (B) whole cell lysates. (Predicted band size: 54 kD; Observed band size: 65 kD)

STORAGE

Store at 4°C short term. For long term storage, store at -20°C, avoiding freeze/thaw cycles.

NOTE

For Research Use Only. Not for diagnostic, therapeutics, prophylactic or in vivo use.