

DATASHEET

Endobrevin Rabbit Polyclonal Antibody

CAT. NO. APA17276

KEY FEATURES

Target	Endobrevin	Source / Host	Rabbit
Reactivity	Human, Mouse, Rat	Clonality	Polyclonal
Applications	WB	Conjugation	Unconjugated
Form / Buffer	Liquid in 0.42% Potassium phosphate, 0.87% Sodium chloride, pH 7.3, 30% glycerol, and 0.01% sodium azide.		Storage at -20°C

BACKGROUND

SNAREs, soluble N-ethylmaleimide-sensitive factor-attachment protein receptors, are essential proteins for fusion of cellular membranes. SNAREs localized on opposing membranes assemble to form a trans-SNARE complex, an extended, parallel four alpha-helical bundle that drives membrane fusion. VAMP8 is a SNARE involved in autophagy through the direct control of autophagosome membrane fusion with the lysosome membrane via its interaction with the STX17-SNAP29 binary t-SNARE complex. Also required for dense-granule secretion in platelets. Also plays a role in regulated enzyme secretion in pancreatic acinar cells. Involved in the abscission of the midbody during cell division, which leads to completely separate daughter cells.

APPLICATION

To ensure optimal assay performance, AREX recommends conducting reagent titration tailored to each testing system for optimal detection results.

WB	1:500 - 1:2000
----	----------------

*Results are sample-specific. Please refer to your local assay conditions and test parameters for reference.

PRODUCT OVERVIEW

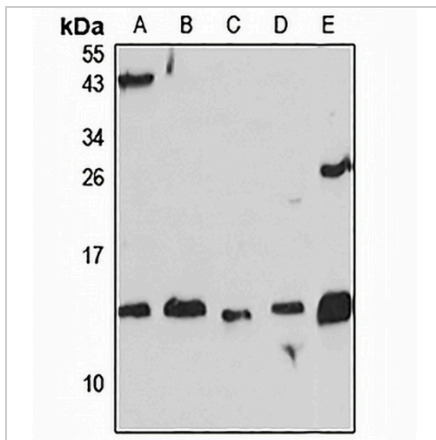
Description	Rabbit polyclonal antibody to Endobrevin
Specificity	Recognizes endogenous levels of Endobrevin protein
Antibody Type	Primary antibody
Immunogen	Recombinant fusion protein of human Endobrevin. The exact sequence is proprietary.
Purification	The antibody was purified by immunogen affinity chromatography.
Molecular Weight	Predicted: 11 kD; Observed: 14 kD
Form/Buffer	Liquid in 0.42% Potassium phosphate, 0.87% Sodium chloride, pH 7.3, 30% glycerol, and 0.01% sodium azide.
Alternative Names	Vesicle-associated membrane protein 8; VAMP-8; Endobrevin; EDB
Gene Symbol	VAMP8
Entrez Gene	8673(Human); 22320(Mouse); 83730(Rat)
SwissProt	Q9BV40(Human); O70404(Mouse); Q9WUF4(Rat)

*AREX continuously optimizes our products. Webpage content may not reflect the latest updates. For inquiries, please contact info@arexbio.com or your local distributor.

*Clone Number, Reactivity, Source/Host and Clonality can be found in the product name and Key Features section above.

DATASHEET**Endobrevin Rabbit Polyclonal Antibody**

CAT. NO. APA17276

DATA

Western blot analysis of Endobrevin expression in HeLa (A), NIH3T3 (B), PC12 (C), mouse liver (D), rat lung (E) whole cell lysates. (Predicted band size: 11 kDa; Observed band size: 14 kDa)

STORAGE

Store at 4°C short term. For long term storage, store at -20°C, avoiding freeze/thaw cycles.

NOTE

For Research Use Only. Not for diagnostic, therapeutics, prophylactic or in vivo use.