

DATASHEET

VAP-A Rabbit Polyclonal Antibody

CAT. NO. APA17277

KEY FEATURES

Target	VAP-A	Source / Host	Rabbit
Reactivity	Human, Mouse, Rat	Clonality	Polyclonal
Applications	WB, IF/ICC	Conjugation	Unconjugated
Form / Buffer	Liquid in 0.42% Potassium phosphate, 0.87% Sodium chloride, pH 7.3, 30% glycerol, and 0.01% sodium azide.		Storage at -20°C

BACKGROUND

Endoplasmic reticulum (ER)-anchored protein that mediates the formation of contact sites between the ER and endosomes via interaction with FFAT motif-containing proteins such as STARD3 or WDR44 -anchored protein that mediates the formation of contact sites between the ER and endosomes via interaction with FFAT motif-containing proteins such as STARD3 or WDR44 . STARD3-VAPA interaction enables cholesterol transfer from the ER to endosomes . Via interaction with WDR44 participates in neosynthesized protein export . In addition, recruited to the plasma membrane through OSBPL3 binding . The OSBPL3-VAPA complex stimulates RRAS signaling which in turn attenuates integrin beta-1 (ITGB1) activation at the cell surface . With OSBPL3, may regulate ER morphology .

APPLICATION

To ensure optimal assay performance, AREX recommends conducting reagent titration tailored to each testing system for optimal detection results.

WB	1:500 - 1:1000
IF/ICC	1:50 - 1:200

*Results are sample-specific. Please refer to your local assay conditions and test parameters for reference.

PRODUCT OVERVIEW

Description	Rabbit polyclonal antibody to VAP-A
Specificity	Recognizes endogenous levels of VAP-A protein
Antibody Type	Primary antibody
Immunogen	Recombinant fusion protein of human VAP-A. The exact sequence is proprietary.
Purification	The antibody was purified by immunogen affinity chromatography.
Molecular Weight	Predicted: 27; Observed: 28 kD
Form/Buffer	Liquid in 0.42% Potassium phosphate, 0.87% Sodium chloride, pH 7.3, 30% glycerol, and 0.01% sodium azide.
Alternative Names	VAP33; Vesicle-associated membrane protein-associated protein A; VAMP-A; VAMP-associated protein A; VAP-A; 33 kDa VAMP-associated protein; VAP-33
Gene Symbol	VAPA
Entrez Gene	9218(Human); 30960(Mouse); 58857(Rat)
SwissProt	Q9P0L0(Human); Q9WV55(Mouse); Q9Z270(Rat)

*AREX continuously optimizes our products. Webpage content may not reflect the latest updates. For inquiries, please contact info@arexbio.com or your local distributor.

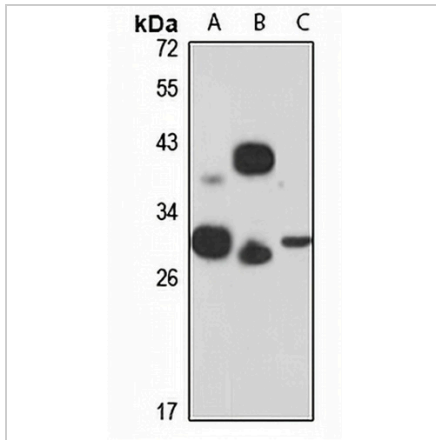
*Clone Number, Reactivity, Source/Host and Clonality can be found in the product name and Key Features section above.

DATASHEET

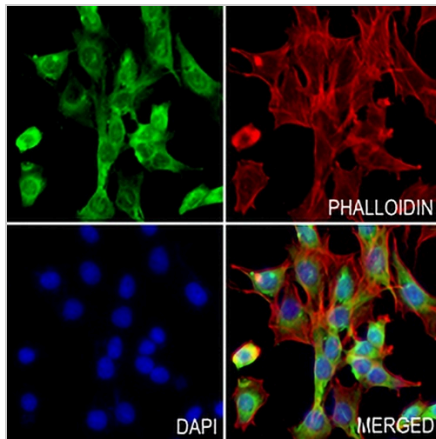
VAP-A Rabbit Polyclonal Antibody

CAT. NO. APA17277

DATA



Western blot analysis of VAP-A expression in B cell (A), mouse heart (B), mouse pancreas (C) whole cell lysates. (Predicted band size: 27; 32 kD; Observed band size: 28 kD)



Immunofluorescent analysis of VAP-A staining in MOVAS cells. Formalin-fixed cells were permeabilized with 0.1% Triton X-100 in TBS for 5-10 minutes and blocked with 3% BSA-PBS for 30 minutes at room temperature. Cells were probed with the primary antibody in 3% BSA-PBS and incubated overnight at 4 °C in a humidified chamber. Cells were washed with PBST and incubated with a AREX® Fluor 488 -conjugated secondary antibody (green) in PBS at room temperature in the dark. Phalloidin - AREX® Fluor 594 was used to stain Actin filaments (red). DAPI was used to stain the cell nuclei (blue).

STORAGE

Store at 4°C short term. For long term storage, store at -20°C, avoiding freeze/thaw cycles.

NOTE

For Research Use Only. Not for diagnostic, therapeutics, prophylactic or in vivo use.