

## DATASHEET

# VAT1 Rabbit Polyclonal Antibody

CAT. NO. APA17280

### KEY FEATURES

Target	VAT1	Source / Host	Rabbit
Reactivity	Human, Mouse, Rat	Clonality	Polyclonal
Applications	WB, IF/ICC	Conjugation	Unconjugated
Form / Buffer	Liquid in 0.42% Potassium phosphate, 0.87% Sodium chloride, pH 7.3, 30% glycerol, and 0.01% sodium azide.		Storage at -20°C

### BACKGROUND

Multifunctional protein with enzymatic and transport activities . Probable NADPH-dependent quinone oxidoreductase which physiological substrates and function are unclear . Alternatively, has also been suggested to mediate the transfer of negatively charged phospholipids including phosphatidic acid (PA), phosphatidylserine (PS) and phosphatidylglycerol (PG) between endoplasmic reticulum and mitochondrial membranes . Could regulate mitochondrial fusion through its interaction with mitofusins .

### APPLICATION

To ensure optimal assay performance, AREX recommends conducting reagent titration tailored to each testing system for optimal detection results.

WB	1:500 - 1:2000
IF/ICC	1:50 - 1:200

\*Results are sample-specific. Please refer to your local assay conditions and test parameters for reference.

### PRODUCT OVERVIEW

Description	Rabbit polyclonal antibody to VAT1
Specificity	Recognizes endogenous levels of VAT1 protein
Antibody Type	Primary antibody
Immunogen	KLH-conjugated synthetic peptide of human VAT1. The exact sequence is proprietary.
Purification	The antibody was purified by immunogen affinity chromatography.
Molecular Weight	Predicted: 28; Observed: 42 kD
Form/Buffer	Liquid in 0.42% Potassium phosphate, 0.87% Sodium chloride, pH 7.3, 30% glycerol, and 0.01% sodium azide.
Alternative Names	Synaptic vesicle membrane protein VAT-1 homolog
Gene Symbol	VAT1
Entrez Gene	10493(Human); 26949(Mouse); 287721(Rat)
SwissProt	Q99536(Human); Q62465(Mouse); Q3MIE4(Rat)

\*AREX continuously optimizes our products. Webpage content may not reflect the latest updates. For inquiries, please contact [info@arexbio.com](mailto:info@arexbio.com) or your local distributor.

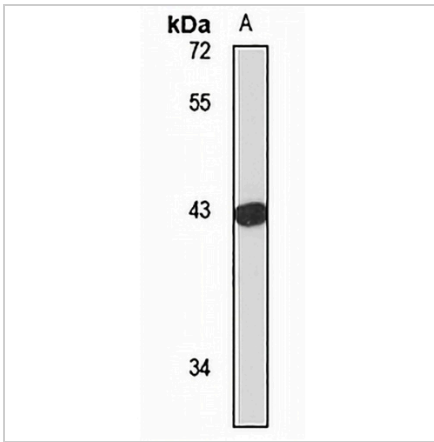
\*Clone Number, Reactivity, Source/Host and Clonality can be found in the product name and Key Features section above.

**DATASHEET**

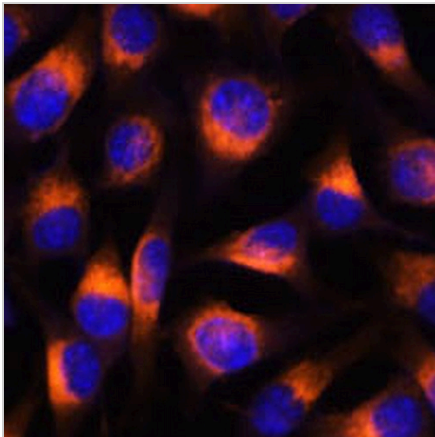
**VAT1 Rabbit Polyclonal Antibody**

CAT. NO. APA17280

**DATA**



Western blot analysis of VAT1 expression in K562 (A) whole cell lysates. (Predicted band size: 28; 34; 41 kD; Observed band size: 42 kD)



Immunofluorescent analysis of VAT1 staining in L929 cells. Formalin-fixed cells were permeabilized with 0.1% Triton X-100 in TBS for 5-10 minutes and blocked with 3% BSA-PBS for 30 minutes at room temperature. Cells were probed with the primary antibody in 3% BSA-PBS and incubated overnight at 4 °C in a humidified chamber. Cells were washed with PBST and incubated with a AREX® Fluor 594-conjugated secondary antibody (red) in PBS at room temperature in the dark. DAPI was used to stain the cell nuclei (blue).

**STORAGE**

Store at 4°C short term. For long term storage, store at -20°C, avoiding freeze/thaw cycles.

**NOTE**

For Research Use Only. Not for diagnostic, therapeutics, prophylactic or in vivo use.