

## DATASHEET

# VPS25 Rabbit Polyclonal Antibody

CAT. NO. APA17289

### KEY FEATURES

|               |   |               |                     |
|---------------|---|---------------|---------------------|
| Target        | VPS25   | Source / Host | Rabbit              |
| Reactivity    | Human, Mouse, Rat   | Clonality     | Polyclonal          |
| Applications  | WB, IF/ICC  | Conjugation   | Unconjugated        |
| Form / Buffer | Liquid in 0.42% Potassium phosphate, 0.87% Sodium chloride, pH 7.3, 30% glycerol, and 0.01% sodium azide. |               | Storage<br>at -20°C |

### BACKGROUND

Component of the ESCRT-II complex (endosomal sorting complex required for transport II), which is required for multivesicular body (MVB) formation and sorting of endosomal cargo proteins into MVBs. The MVB pathway mediates delivery of transmembrane proteins into the lumen of the lysosome for degradation. The ESCRT-II complex is probably involved in the recruitment of the ESCRT-III complex. The ESCRT-II complex may also play a role in transcription regulation, possibly via its interaction with ELL. The ESCRT-II complex may be involved in facilitating the budding of certain RNA viruses.

### APPLICATION

To ensure optimal assay performance, AREX recommends conducting reagent titration tailored to each testing system for optimal detection results.

|        |                |
|--------|----------------|
| WB     | 1:500 - 1:2000 |
| IF/ICC | 1:50 - 1:200   |

\*Results are sample-specific. Please refer to your local assay conditions and test parameters for reference.

### PRODUCT OVERVIEW

|                   |  |
|-------------------|--|
| Description       | Rabbit polyclonal antibody to VPS25  |
| Specificity       | Recognizes endogenous levels of VPS25 protein  |
| Antibody Type     | Primary antibody   |
| Immunogen         | Recombinant fusion protein of human VPS25. The exact sequence is proprietary.  |
| Purification      | The antibody was purified by immunogen affinity chromatography.  |
| Molecular Weight  | Predicted: 20 kD; Observed: 20 kD  |
| Form/Buffer       | Liquid in 0.42% Potassium phosphate, 0.87% Sodium chloride, pH 7.3, 30% glycerol, and 0.01% sodium azide.  |
| Alternative Names | DERP9; EAP20; Vacuolar protein-sorting-associated protein 25; hVps25; Dermal papilla-derived protein 9; ELL-associated protein of 20 kDa; ESCRT-II complex subunit VPS25 |
| Gene Symbol       | VPS25  |
| Entrez Gene       | 84313(Human); 28084(Mouse); 681059(Rat)  |
| SwissProt         | Q9BRG1(Human); Q9CQ80(Mouse); P0COA1(Rat)  |

\*AREX continuously optimizes our products. Webpage content may not reflect the latest updates. For inquiries, please contact [info@arexbio.com](mailto:info@arexbio.com) or your local distributor.

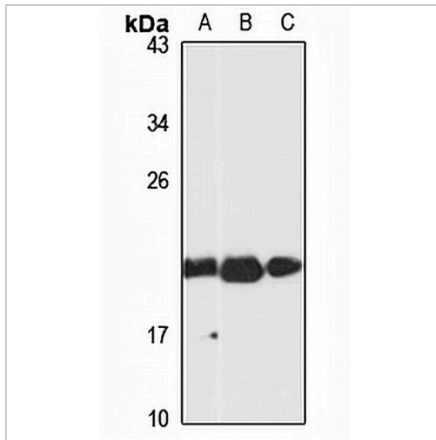
\*Clone Number, Reactivity, Source/Host and Clonality can be found in the product name and Key Features section above.

**DATASHEET**

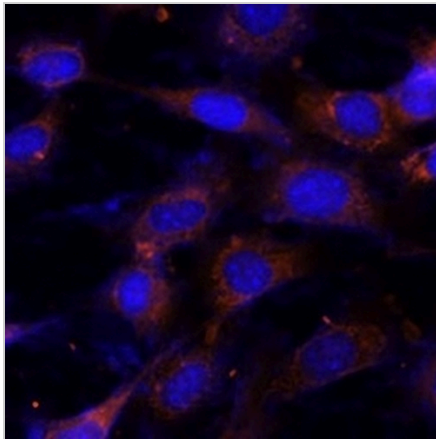
**VPS25 Rabbit Polyclonal Antibody**

CAT. NO. APA17289

**DATA**



Western blot analysis of VPS25 expression in BxPC3 (A), mouse brain (B), rat lung (C) whole cell lysates. (Predicted band size: 20 kD; Observed band size: 20 kD)



Immunofluorescent analysis of VPS25 staining in C6 cells. Formalin-fixed cells were permeabilized with 0.1% Triton X-100 in TBS for 5-10 minutes and blocked with 3% BSA-PBS for 30 minutes at room temperature. Cells were probed with the primary antibody in 3% BSA-PBS and incubated overnight at 4 °C in a humidified chamber. Cells were washed with PBST and incubated with a Alexa Fluor 594-conjugated secondary antibody (red) in PBS at room temperature in the dark.

**STORAGE**

Store at 4°C short term. For long term storage, store at -20°C, avoiding freeze/thaw cycles.

**NOTE**

For Research Use Only. Not for diagnostic, therapeutics, prophylactic or in vivo use.