

DATASHEET

WBP11 Rabbit Polyclonal Antibody

CAT. NO. APA17299

KEY FEATURES

Target	WBP11	Source / Host	Rabbit
Reactivity	Human, Mouse, Rat	Clonality	Polyclonal
Applications	WB, IF/ICC	Conjugation	Unconjugated
Form / Buffer	Liquid in 0.42% Potassium phosphate, 0.87% Sodium chloride, pH 7.3, 30% glycerol, and 0.01% sodium azide.		Storage at -20°C

BACKGROUND

Activates pre-mRNA splicing. May inhibit PP1 phosphatase activity.

APPLICATION

To ensure optimal assay performance, AREX recommends conducting reagent titration tailored to each testing system for optimal detection results.

WB	1:500 - 1:2000
IF/ICC	1:50 - 1:200

*Results are sample-specific. Please refer to your local assay conditions and test parameters for reference.

PRODUCT OVERVIEW

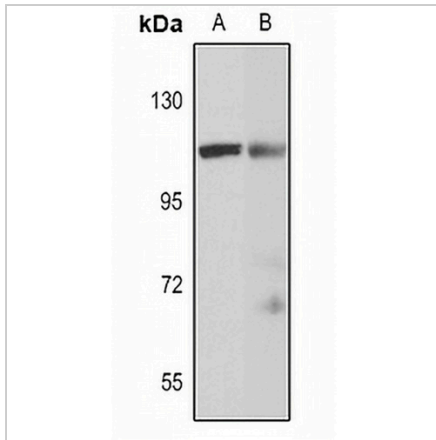
Description	Rabbit polyclonal antibody to WBP11
Specificity	Recognizes endogenous levels of WBP11 protein
Antibody Type	Primary antibody
Immunogen	Recombinant fusion protein of human WBP11. The exact sequence is proprietary.
Purification	The antibody was purified by immunogen affinity chromatography.
Molecular Weight	Predicted: 69 kD; Observed: 115 kD
Form/Buffer	Liquid in 0.42% Potassium phosphate, 0.87% Sodium chloride, pH 7.3, 30% glycerol, and 0.01% sodium azide.
Alternative Names	NPWBP; SIPP1; SNP70; WW domain-binding protein 11; WBP-11; Npw38-binding protein; NpwBP; SH3 domain-binding protein SNP70; Splicing factor that interacts with PQBP-1 and PP1
Gene Symbol	WBP11
Entrez Gene	51729(Human); 60321(Mouse)
SwissProt	Q9Y2W2(Human); Q923D5(Mouse)

*AREX continuously optimizes our products. Webpage content may not reflect the latest updates. For inquiries, please contact info@arexbio.com or your local distributor.

*Clone Number, Reactivity, Source/Host and Clonality can be found in the product name and Key Features section above.

DATASHEET**WBP11 Rabbit Polyclonal Antibody**

CAT. NO. APA17299

DATA

Western blot analysis of WBP11 expression in HEK293T (A), mouse brain (B) whole cell lysates. (Predicted band size: 69 kD; Observed band size: 115 kD)

STORAGE

Store at 4°C short term. For long term storage, store at -20°C, avoiding freeze/thaw cycles.

NOTE

For Research Use Only. Not for diagnostic, therapeutics, prophylactic or in vivo use.