

## DATASHEET

# WBP2 Rabbit Polyclonal Antibody

CAT. NO. APA17300

### KEY FEATURES

Target	WBP2	Source / Host	Rabbit
Reactivity	Human, Mouse, Rat	Clonality	Polyclonal
Applications	WB	Conjugation	Unconjugated
Form / Buffer	Liquid in 0.42% Potassium phosphate, 0.87% Sodium chloride, pH 7.3, 30% glycerol, and 0.01% sodium azide.		Storage at -20°C

### BACKGROUND

Acts as a transcriptional coactivator of estrogen and progesterone receptors (ESR1 and PGR) upon hormone activation upon hormone activation. In presence of estrogen, binds to ESR1-responsive promoters. Synergizes with YAP1 to enhance PGR activity. Modulates expression of post-synaptic scaffolding proteins via regulation of ESR1, ESR2 and PGR.

### APPLICATION

To ensure optimal assay performance, AREX recommends conducting reagent titration tailored to each testing system for optimal detection results.

WB	1:500 - 1:2000
----	----------------

\*Results are sample-specific. Please refer to your local assay conditions and test parameters for reference.

### PRODUCT OVERVIEW

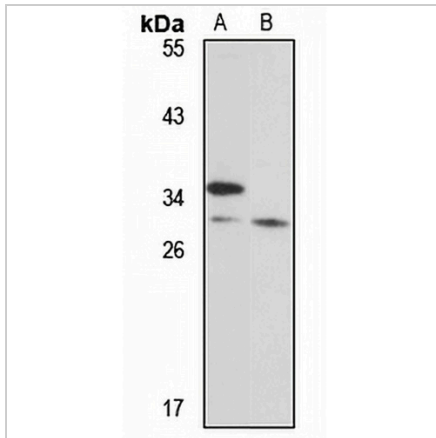
Description	Rabbit polyclonal antibody to WBP2
Specificity	Recognizes endogenous levels of WBP2 protein
Antibody Type	Primary antibody
Immunogen	Recombinant fusion protein of human WBP2. The exact sequence is proprietary.
Purification	The antibody was purified by immunogen affinity chromatography.
Molecular Weight	Predicted: 28 kD; Observed: 28 kD
Form/Buffer	Liquid in 0.42% Potassium phosphate, 0.87% Sodium chloride, pH 7.3, 30% glycerol, and 0.01% sodium azide.
Alternative Names	WW domain-binding protein 2; WBP-2
Gene Symbol	WBP2
Entrez Gene	23558(Human); 22378(Mouse); 192645(Rat)
SwissProt	Q969T9(Human); P97765(Mouse); Q8R478(Rat)

\*AREX continuously optimizes our products. Webpage content may not reflect the latest updates. For inquiries, please contact [info@arexbio.com](mailto:info@arexbio.com) or your local distributor.

\*Clone Number, Reactivity, Source/Host and Clonality can be found in the product name and Key Features section above.

**DATASHEET****WBP2 Rabbit Polyclonal Antibody**

CAT. NO. APA17300

**DATA**

Western blot analysis of WBP2 expression in A375 (A), rat spleen (B) whole cell lysates.  
(Predicted band size: 28 kD; Observed band size: 28 kD)

**STORAGE**

Store at 4°C short term. For long term storage, store at -20°C, avoiding freeze/thaw cycles.

**NOTE**

For Research Use Only. Not for diagnostic, therapeutics, prophylactic or in vivo use.