

DATASHEET

WDFY2 Rabbit Polyclonal Antibody

CAT. NO. APA17303

KEY FEATURES

Target	WDFY2	Source / Host	Rabbit
Reactivity	Human, Mouse	Clonality	Polyclonal
Applications	WB	Conjugation	Unconjugated
Form / Buffer	Liquid in 0.42% Potassium phosphate, 0.87% Sodium chloride, pH 7.3, 30% glycerol, and 0.01% sodium azide.		Storage at -20°C

BACKGROUND

Acts in an adapter protein-like fashion to mediate the interaction between the kinase PRKCZ and its substrate VAMP2 and increases the PRKCZ-dependent phosphorylation of VAMP2 . Positively regulates adipocyte differentiation, by facilitating the phosphorylation and thus inactivation of the anti-adipogenic transcription factor FOXO1 by the kinase AKT1 . Plays a role in endosomal control of AKT2 signaling; required for insulin-stimulated AKT2 phosphorylation and glucose uptake and insulin-stimulated phosphorylation of AKT2 substrates . Participates in transferrin receptor endocytosis .

APPLICATION

To ensure optimal assay performance, AREX recommends conducting reagent titration tailored to each testing system for optimal detection results.

WB	1:500 - 1:2000
----	----------------

*Results are sample-specific. Please refer to your local assay conditions and test parameters for reference.

PRODUCT OVERVIEW

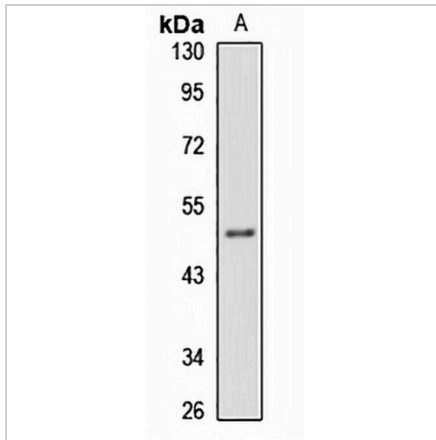
Description	Rabbit polyclonal antibody to WDFY2
Specificity	Recognizes endogenous levels of WDFY2 protein
Antibody Type	Primary antibody
Immunogen	Recombinant fusion protein of human WDFY2. The exact sequence is proprietary.
Purification	The antibody was purified by immunogen affinity chromatography.
Molecular Weight	Predicted: 45 kD; Observed: 45 kD
Form/Buffer	Liquid in 0.42% Potassium phosphate, 0.87% Sodium chloride, pH 7.3, 30% glycerol, and 0.01% sodium azide.
Alternative Names	WDF2; ZFYVE22; WD repeat and FYVE domain-containing protein 2; WD40- and FYVE domain-containing protein 2; Zinc finger FYVE domain-containing protein 22
Gene Symbol	WDFY2
Entrez Gene	115825(Human); 268752(Mouse)
SwissProt	Q96P53(Human); Q8BUB4(Mouse)

*AREX continuously optimizes our products. Webpage content may not reflect the latest updates. For inquiries, please contact info@arexbio.com or your local distributor.

*Clone Number, Reactivity, Source/Host and Clonality can be found in the product name and Key Features section above.

DATASHEET**WDFY2 Rabbit Polyclonal Antibody**

CAT. NO. APA17303

DATA

Western blot analysis of WDFY2 expression in HepG2 (A) whole cell lysates. (Predicted band size: 45 kD; Observed band size: 45 kD)

STORAGE

Store at 4°C short term. For long term storage, store at -20°C, avoiding freeze/thaw cycles.

NOTE

For Research Use Only. Not for diagnostic, therapeutics, prophylactic or in vivo use.