

DATASHEET

WDR81 Rabbit Polyclonal Antibody

CAT. NO. APA17310

KEY FEATURES

Target	WDR81	Source / Host	Rabbit
Reactivity	Human, Mouse, Rat	Clonality	Polyclonal
Applications	WB	Conjugation	Unconjugated
Form / Buffer	Liquid in 0.42% Potassium phosphate, 0.87% Sodium chloride, pH 7.3, 30% glycerol, and 0.01% sodium azide.		Storage at -20°C

BACKGROUND

Functions as a negative regulator of the PI3 kinase/PI3K activity associated with endosomal membranes via BECN1, a core subunit of the PI3K complex. By modifying the phosphatidylinositol 3-phosphate/PtdInsP3 content of endosomal membranes may regulate endosome fusion, recycling, sorting and early to late endosome transport . It is for instance, required for the delivery of cargos like BST2/tetherin from early to late endosome and thereby participates indirectly to their degradation by the lysosome . May also play a role in aggrephagy, the macroautophagic degradation of ubiquitinated protein aggregates. In this process, may regulate the interaction of SQSTM1 with ubiquitinated proteins and also recruit MAP1LC3C .

APPLICATION

To ensure optimal assay performance, AREX recommends conducting reagent titration tailored to each testing system for optimal detection results.

WB	1:500 - 1:1000
----	----------------

*Results are sample-specific. Please refer to your local assay conditions and test parameters for reference.

PRODUCT OVERVIEW

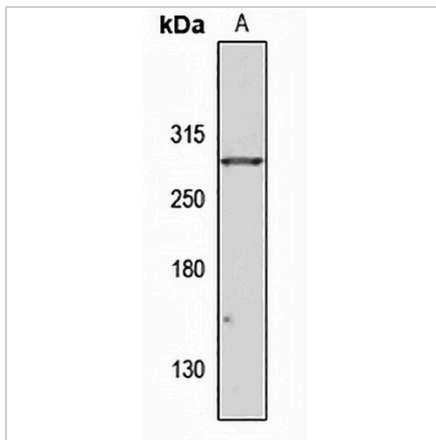
Description	Rabbit polyclonal antibody to WDR81
Specificity	Recognizes endogenous levels of WDR81 protein
Antibody Type	Primary antibody
Immunogen	Recombinant fusion protein of human WDR81. The exact sequence is proprietary.
Purification	The antibody was purified by immunogen affinity chromatography.
Molecular Weight	Predicted: 74; Observed: 260 kD
Form/Buffer	Liquid in 0.42% Potassium phosphate, 0.87% Sodium chloride, pH 7.3, 30% glycerol, and 0.01% sodium azide.
Alternative Names	WD repeat-containing protein 81
Gene Symbol	WDR81
Entrez Gene	124997(Human); 192652(Mouse); 303312(Rat)
SwissProt	Q562E7(Human); Q5ND34(Mouse); D4A929(Rat)

*AREX continuously optimizes our products. Webpage content may not reflect the latest updates. For inquiries, please contact info@arexbio.com or your local distributor.

*Clone Number, Reactivity, Source/Host and Clonality can be found in the product name and Key Features section above.

DATASHEET**WDR81 Rabbit Polyclonal Antibody**

CAT. NO. APA17310

DATA

Western blot analysis of WDR81 expression in mouse brain (A) whole cell lysates.
(Predicted band size: 74; 77; 79; 95; 197; 211 kD; Observed band size: 260 kD)

STORAGE

Store at 4°C short term. For long term storage, store at -20°C, avoiding freeze/thaw cycles.

NOTE

For Research Use Only. Not for diagnostic, therapeutics, prophylactic or in vivo use.