

DATASHEET

WDR82 Rabbit Polyclonal Antibody

CAT. NO. APA17311

KEY FEATURES

Target	WDR82	Source / Host	Rabbit
Reactivity	Human, Mouse, Rat	Clonality	Polyclonal
Applications	WB	Conjugation	Unconjugated
Form / Buffer	Liquid in 0.42% Potassium phosphate, 0.87% Sodium chloride, pH 7.3, 30% glycerol, and 0.01% sodium azide.		Storage at -20°C

BACKGROUND

Regulatory component of the SET1/COMPASS complex implicated in the tethering of this complex to transcriptional start sites of active genes . Facilitates histone H3 'Lys-4' methylation (H3K4me) via recruitment of the SETD1A or SETD1B to the 'Ser-5' phosphorylated C-terminal domain (CTD) of RNA polymerase II large subunit (POLR2A) . Component of the PNUITS-PP1 protein phosphatase complex, a protein phosphatase 1 (PP1) complex that promotes RNA polymerase II transcription pause-release, allowing transcription elongation . PNUITS-PP1 also plays a role in the control of chromatin structure and cell cycle progression during the transition from mitosis into interphase .

APPLICATION

To ensure optimal assay performance, AREX recommends conducting reagent titration tailored to each testing system for optimal detection results.

WB	1:500 - 1:2000
----	----------------

*Results are sample-specific. Please refer to your local assay conditions and test parameters for reference.

PRODUCT OVERVIEW

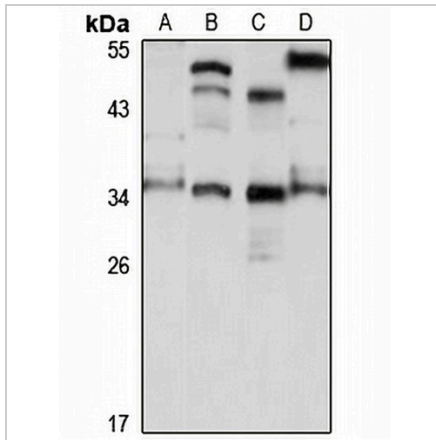
Description	Rabbit polyclonal antibody to WDR82
Specificity	Recognizes endogenous levels of WDR82 protein
Antibody Type	Primary antibody
Immunogen	Recombinant fusion protein of human WDR82. The exact sequence is proprietary.
Purification	The antibody was purified by immunogen affinity chromatography.
Molecular Weight	Predicted: 35 kD; Observed: 35 kD
Form/Buffer	Liquid in 0.42% Potassium phosphate, 0.87% Sodium chloride, pH 7.3, 30% glycerol, and 0.01% sodium azide.
Alternative Names	TMEM113; WDR82A; WD repeat-containing protein 82; Protein TMEM113; Swd2
Gene Symbol	WDR82
Entrez Gene	80335(Human); 77305(Mouse)
SwissProt	Q6UXN9(Human); Q8BFQ4(Mouse)

*AREX continuously optimizes our products. Webpage content may not reflect the latest updates. For inquiries, please contact info@arexbio.com or your local distributor.

*Clone Number, Reactivity, Source/Host and Clonality can be found in the product name and Key Features section above.

DATASHEET**WDR82 Rabbit Polyclonal Antibody**

CAT. NO. APA17311

DATA

Western blot analysis of WDR82 expression in HepG2 (A), mouse heart (B), mouse kidney (C), rat lung (D) whole cell lysates. (Predicted band size: 35 kD; Observed band size: 35 kD)

STORAGE

Store at 4°C short term. For long term storage, store at -20°C, avoiding freeze/thaw cycles.

NOTE

For Research Use Only. Not for diagnostic, therapeutics, prophylactic or in vivo use.