

**DATASHEET**

**NSD3 Rabbit Polyclonal Antibody**

CAT. NO. APA17312

**KEY FEATURES**

Target	NSD3	Source / Host	Rabbit
Reactivity	Human, Mouse, Rat	Clonality	Polyclonal
Applications	WB	Conjugation	Unconjugated
Form / Buffer	Liquid in 0.42% Potassium phosphate, 0.87% Sodium chloride, pH 7.3, 30% glycerol, and 0.01% sodium azide.		Storage at-20°C

**BACKGROUND**

Histone methyltransferase. Preferentially dimethylates 'Lys-4' and 'Lys-27' of histone H3 forming H3K4me2 and H3K27me2. H3 'Lys-4' methylation represents a specific tag for epigenetic transcriptional activation, while 'Lys-27' is a mark for transcriptional repression.

**APPLICATION**

To ensure optimal assay performance, AREX recommends conducting reagent titration tailored to each testing system for optimal detection results.

WB	1:500 - 1:1000
----	----------------

\*Results are sample-specific. Please refer to your local assay conditions and test parameters for reference.

**PRODUCT OVERVIEW**

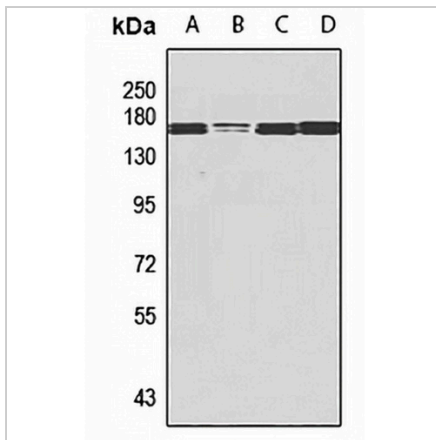
Description	Rabbit polyclonal antibody to NSD3
Specificity	Recognizes endogenous levels of NSD3 protein
Antibody Type	Primary antibody
Immunogen	Recombinant fusion protein of human NSD3. The exact sequence is proprietary.
Purification	The antibody was purified by immunogen affinity chromatography.
Molecular Weight	Predicted: 72; Observed: 160 kD
Form/Buffer	Liquid in 0.42% Potassium phosphate, 0.87% Sodium chloride, pH 7.3, 30% glycerol, and 0.01% sodium azide.
Alternative Names	NSD3; Histone-lysine N-methyltransferase NSD3; Nuclear SET domain-containing protein 3; Protein whistle; WHSC1-like 1 isoform 9 with methyltransferase activity to lysine; Wolf-Hirschhorn syndrome candidate 1-like protein 1; WHSC1-like protein 1
Gene Symbol	WHSC1L1
Entrez Gene	54904(Human); 234135(Mouse)
SwissProt	Q9BZ95(Human); Q6P2L6(Mouse)

\*AREX continuously optimizes our products. Webpage content may not reflect the latest updates. For inquiries, please contact [info@arexbio.com](mailto:info@arexbio.com) or your local distributor.

\*Clone Number, Reactivity, Source/Host and Clonality can be found in the product name and Key Features section above.

**DATASHEET****NSD3 Rabbit Polyclonal Antibody**

CAT. NO. APA17312

**DATA**

Western blot analysis of NSD3 expression in HeLa (A), MCF7 (B), mouse spleen (C), mouse kidney (D) whole cell lysates. (Predicted band size: 72; 154; 156; 160; 161 kD; Observed band size: 160 kD)

**STORAGE**

Store at 4°C short term. For long term storage, store at -20°C, avoiding freeze/thaw cycles.

**NOTE**

For Research Use Only. Not for diagnostic, therapeutics, prophylactic or in vivo use.