

**DATASHEET**

**XPNPEP1 Rabbit Polyclonal Antibody**

CAT. NO. APA17321

**KEY FEATURES**

Target	XPNPEP1	Source / Host	Rabbit
Reactivity	Human, Mouse, Rat	Clonality	Polyclonal
Applications	WB	Conjugation	Unconjugated
Form / Buffer	Liquid in 0.42% Potassium phosphate, 0.87% Sodium chloride, pH 7.3, 30% glycerol, and 0.01% sodium azide.		Storage at -20°C

**BACKGROUND**

Metalloaminopeptidase that catalyzes the removal of a penultimate prolyl residue from the N-termini of peptides, such as Arg-Pro-Pro. Contributes to the degradation of bradykinin.

**APPLICATION**

To ensure optimal assay performance, AREX recommends conducting reagent titration tailored to each testing system for optimal detection results.

WB	1:500 - 1:2000
----	----------------

\*Results are sample-specific. Please refer to your local assay conditions and test parameters for reference.

**PRODUCT OVERVIEW**

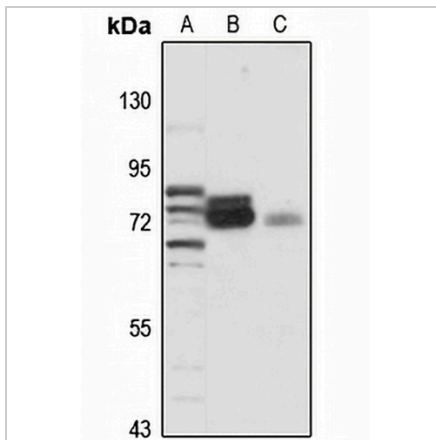
Description	Rabbit polyclonal antibody to XPNPEP1
Specificity	Recognizes endogenous levels of XPNPEP1 protein
Antibody Type	Primary antibody
Immunogen	Recombinant fusion protein of human XPNPEP1. The exact sequence is proprietary.
Purification	The antibody was purified by immunogen affinity chromatography.
Molecular Weight	Predicted: 67; Observed: 70-85 kD
Form/Buffer	Liquid in 0.42% Potassium phosphate, 0.87% Sodium chloride, pH 7.3, 30% glycerol, and 0.01% sodium azide.
Alternative Names	XPNPEPL; XPNPEPL1; Xaa-Pro aminopeptidase 1; Aminoacylproline aminopeptidase; Cytosolic aminopeptidase P; Soluble aminopeptidase P; sAmp; X-Pro aminopeptidase 1; X-prolyl aminopeptidase 1 soluble
Gene Symbol	XPNPEP1
Entrez Gene	7511(Human); 170750(Mouse); 170751(Rat)
SwissProt	Q9NQW7(Human); Q6P1B1(Mouse); O54975(Rat)

\*AREX continuously optimizes our products. Webpage content may not reflect the latest updates. For inquiries, please contact [info@arexbio.com](mailto:info@arexbio.com) or your local distributor.

\*Clone Number, Reactivity, Source/Host and Clonality can be found in the product name and Key Features section above.

**DATASHEET****XPNPEP1 Rabbit Polyclonal Antibody**

CAT. NO. APA17321

**DATA**

Western blot analysis of XPNPEP1 expression in LO2 (A), rat testis (B), rat liver (C) whole cell lysates. (Predicted band size: 67; 69; 72; 74 kD; Observed band size: 70-85 kD)

**STORAGE**

Store at 4°C short term. For long term storage, store at -20°C, avoiding freeze/thaw cycles.

**NOTE**

For Research Use Only. Not for diagnostic, therapeutics, prophylactic or in vivo use.