

DATASHEET

Exportin-6 Rabbit Polyclonal Antibody

CAT. NO. APA17322

KEY FEATURES

| | | | |
|---------------|---|---------------|--------------|
| Target | Exportin-6 | Source / Host | Rabbit |
| Reactivity | Human, Mouse | Clonality | Polyclonal |
| Applications | WB | Conjugation | Unconjugated |
| Form / Buffer | Liquid in 0.42% Potassium phosphate, 0.87% Sodium chloride, pH 7.3, 30% glycerol, and 0.01% sodium azide. | Storage | at-20°C |

BACKGROUND

Mediates the nuclear export of actin and profilin-actin complexes in somatic cells.

APPLICATION

To ensure optimal assay performance, AREX recommends conducting reagent titration tailored to each testing system for optimal detection results.

| | |
|----|----------------|
| WB | 1:500 - 1:2000 |
|----|----------------|

*Results are sample-specific. Please refer to your local assay conditions and test parameters for reference.

PRODUCT OVERVIEW

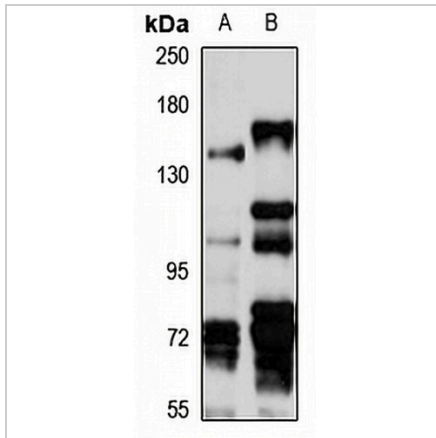
| | |
|-------------------|---|
| Description | Rabbit polyclonal antibody to Exportin-6 |
| Specificity | Recognizes endogenous levels of Exportin-6 protein |
| Antibody Type | Primary antibody |
| Immunogen | Recombinant fusion protein of human Exportin-6. The exact sequence is proprietary. |
| Purification | The antibody was purified by immunogen affinity chromatography. |
| Molecular Weight | Predicted: 127; Observed: 140 kD |
| Form/Buffer | Liquid in 0.42% Potassium phosphate, 0.87% Sodium chloride, pH 7.3, 30% glycerol, and 0.01% sodium azide. |
| Alternative Names | KIAA0370; RANBP20; Exportin-6; Exp6; Ran-binding protein 20 |
| Gene Symbol | XPO6 |
| Entrez Gene | 23214(Human); 74204(Mouse) |
| SwissProt | Q96QU8(Human); Q924Z6(Mouse) |

*AREX continuously optimizes our products. Webpage content may not reflect the latest updates. For inquiries, please contact info@arexbio.com or your local distributor.

*Clone Number, Reactivity, Source/Host and Clonality can be found in the product name and Key Features section above.

DATASHEET**Exportin-6 Rabbit Polyclonal Antibody**

CAT. NO. APA17322

DATA

Western blot analysis of Exportin-6 expression in Jurkat (A), mouse brain (B) whole cell lysates. (Predicted band size: 127; 128 kD; Observed band size: 140 kD)

STORAGE

Store at 4°C short term. For long term storage, store at -20°C, avoiding freeze/thaw cycles.

NOTE

For Research Use Only. Not for diagnostic, therapeutics, prophylactic or in vivo use.