

DATASHEET

YME1L1 Rabbit Polyclonal Antibody

CAT. NO. APA17326

KEY FEATURES

Target	YME1L1	Source / Host	Rabbit
Reactivity	Human	Clonality	Polyclonal
Applications	WB	Conjugation	Unconjugated
Form / Buffer	Liquid in 0.42% Potassium phosphate, 0.87% Sodium chloride, pH 7.3, 30% glycerol, and 0.01% sodium azide.		Storage at -20°C

BACKGROUND

ATP-dependent metalloprotease that catalyzes the degradation of folded and unfolded proteins with a suitable degron sequence in the mitochondrial intermembrane region . Plays an important role in regulating mitochondrial morphology and function by cleaving OPA1 at position S2, giving rise to a form of OPA1 that promotes maintenance of normal mitochondrial structure and mitochondrial protein metabolism . Ensures cell proliferation, maintains normal cristae morphology and complex I respiration activity, promotes antiapoptotic activity and protects mitochondria from the accumulation of oxidatively damaged membrane proteins . Required to control the accumulation of nonassembled respiratory chain subunits (NDUFB6, OX4 and ND1) .

APPLICATION

To ensure optimal assay performance, AREX recommends conducting reagent titration tailored to each testing system for optimal detection results.

WB	1:500 - 1:2000
----	----------------

*Results are sample-specific. Please refer to your local assay conditions and test parameters for reference.

PRODUCT OVERVIEW

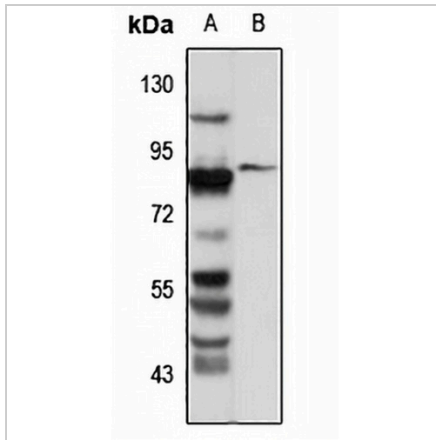
Description	Rabbit polyclonal antibody to YME1L1
Specificity	Recognizes endogenous levels of YME1L1 protein
Antibody Type	Primary antibody
Immunogen	Recombinant fusion protein of human YME1L1. The exact sequence is proprietary.
Purification	The antibody was purified by immunogen affinity chromatography.
Molecular Weight	Predicted: 86 kD; Observed: 86 kD
Form/Buffer	Liquid in 0.42% Potassium phosphate, 0.87% Sodium chloride, pH 7.3, 30% glycerol, and 0.01% sodium azide.
Alternative Names	FTSH1; YME1L; ATP-dependent zinc metalloprotease YME1L1; ATP-dependent metalloprotease FtsH1; Meg-4; Presenilin-associated metalloprotease; PAMP; YME1-like protein 1
Gene Symbol	YME1L1
Entrez Gene	10730(Human); 27377(Mouse)
SwissProt	Q96TA2(Human); O88967(Mouse); Q925S8(Rat)

*AREX continuously optimizes our products. Webpage content may not reflect the latest updates. For inquiries, please contact info@arexbio.com or your local distributor.

*Clone Number, Reactivity, Source/Host and Clonality can be found in the product name and Key Features section above.

DATASHEET**YME1L1 Rabbit Polyclonal Antibody**

CAT. NO. APA17326

DATA

Western blot analysis of YME1L1 expression in mouse liver (A), rat liver (B) whole cell lysates. (Predicted band size: 86 kD; Observed band size: 86 kD)

STORAGE

Store at 4°C short term. For long term storage, store at -20°C, avoiding freeze/thaw cycles.

NOTE

For Research Use Only. Not for diagnostic, therapeutics, prophylactic or in vivo use.