

DATASHEET

YPEL5 Rabbit Polyclonal Antibody

CAT. NO. APA17328

KEY FEATURES

Target	YPEL5	Source / Host	Rabbit
Reactivity	Human, Mouse, Rat	Clonality	Polyclonal
Applications	WB	Conjugation	Unconjugated
Form / Buffer	Liquid in 0.42% Potassium phosphate, 0.87% Sodium chloride, pH 7.3, 30% glycerol, and 0.01% sodium azide.		Storage at -20°C

BACKGROUND

Component of the CTLH E3 ubiquitin-protein ligase complex that selectively accepts ubiquitin from UBE2H and mediates ubiquitination and subsequent proteasomal degradation of the transcription factor HBP1 . Required for normal cell proliferation .

APPLICATION

To ensure optimal assay performance, AREX recommends conducting reagent titration tailored to each testing system for optimal detection results.

WB	1:500 - 1:2000
----	----------------

*Results are sample-specific. Please refer to your local assay conditions and test parameters for reference.

PRODUCT OVERVIEW

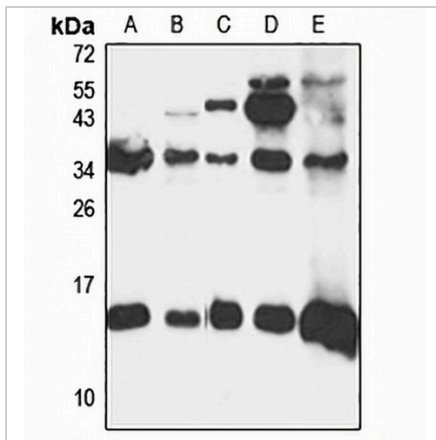
Description	Rabbit polyclonal antibody to YPEL5
Specificity	Recognizes endogenous levels of YPEL5 protein
Antibody Type	Primary antibody
Immunogen	Recombinant fusion protein of human YPEL5. The exact sequence is proprietary.
Purification	The antibody was purified by immunogen affinity chromatography.
Molecular Weight	Predicted: 13 kD; Observed: 14 kD
Form/Buffer	Liquid in 0.42% Potassium phosphate, 0.87% Sodium chloride, pH 7.3, 30% glycerol, and 0.01% sodium azide.
Alternative Names	Protein yippee-like 5
Gene Symbol	YPEL5
Entrez Gene	51646(Human); 383295(Mouse)
SwissProt	P62699(Human); P62700(Mouse)

*AREX continuously optimizes our products. Webpage content may not reflect the latest updates. For inquiries, please contact info@arexbio.com or your local distributor.

*Clone Number, Reactivity, Source/Host and Clonality can be found in the product name and Key Features section above.

DATASHEET**YPEL5 Rabbit Polyclonal Antibody**

CAT. NO. APA17328

DATA

Western blot analysis of YPEL5 expression in HeLa (A), HT29 (B), mouse testis (C), rat brain (D), rat lung (E) whole cell lysates. (Predicted band size: 13 kD; Observed band size: 14 kD)

STORAGE

Store at 4°C short term. For long term storage, store at -20°C, avoiding freeze/thaw cycles.

NOTE

For Research Use Only. Not for diagnostic, therapeutics, prophylactic or in vivo use.