

DATASHEET

YTHDF2 Rabbit Polyclonal Antibody

CAT. NO. APA17329

KEY FEATURES

Target	YTHDF2	Source / Host	Rabbit
Reactivity	Human	Clonality	Polyclonal
Applications	WB	Conjugation	Unconjugated
Form / Buffer	Liquid in 0.42% Potassium phosphate, 0.87% Sodium chloride, pH 7.3, 30% glycerol, and 0.01% sodium azide.		Storage at-20°C

BACKGROUND

Specifically recognizes and binds N6-methyladenosine (m6A)-containing RNAs, and regulates their stability -containing RNAs, and regulates their stability . M6A is a modification present at internal sites of mRNAs and some non-coding RNAs and plays a role in mRNA stability and processing . Acts as a regulator of mRNA stability by promoting degradation of m6A-containing mRNAs via interaction with the CCR4-NOT and ribonuclease P/MRP complexes, depending on the context . The YTHDF paralogs (YTHDF1, YTHDF2 and YTHDF3) share m6A-containing mRNAs targets and act redundantly to mediate mRNA degradation and cellular differentiation .

APPLICATION

To ensure optimal assay performance, AREX recommends conducting reagent titration tailored to each testing system for optimal detection results.

WB	1:500 - 1:1000
----	----------------

*Results are sample-specific. Please refer to your local assay conditions and test parameters for reference.

PRODUCT OVERVIEW

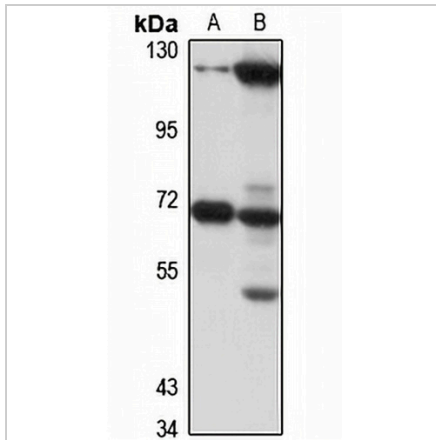
Description	Rabbit polyclonal antibody to YTHDF2
Specificity	Recognizes endogenous levels of YTHDF2 protein
Antibody Type	Primary antibody
Immunogen	Recombinant fusion protein of human YTHDF2. The exact sequence is proprietary.
Purification	The antibody was purified by immunogen affinity chromatography.
Molecular Weight	Predicted: 62 kD; Observed: 68 kD
Form/Buffer	Liquid in 0.42% Potassium phosphate, 0.87% Sodium chloride, pH 7.3, 30% glycerol, and 0.01% sodium azide.
Alternative Names	HGRG8; YTH domain-containing family protein 2; CLL-associated antigen KW-14; High-glucose-regulated protein 8; Renal carcinoma antigen NY-REN-2
Gene Symbol	YTHDF2
Entrez Gene	51441(Human); 213541(Mouse)
SwissProt	Q9Y5A9(Human); Q91YT7(Mouse)

*AREX continuously optimizes our products. Webpage content may not reflect the latest updates. For inquiries, please contact info@arexbio.com or your local distributor.

*Clone Number, Reactivity, Source/Host and Clonality can be found in the product name and Key Features section above.

DATASHEET**YTHDF2 Rabbit Polyclonal Antibody**

CAT. NO. APA17329

DATA

Western blot analysis of YTHDF2 expression in Jurkat (A), mouse testis (B) whole cell lysates. (Predicted band size: 62 kD; Observed band size: 68 kD)

STORAGE

Store at 4°C short term. For long term storage, store at -20°C, avoiding freeze/thaw cycles.

NOTE

For Research Use Only. Not for diagnostic, therapeutics, prophylactic or in vivo use.