

DATASHEET

HCCA2 Rabbit Polyclonal Antibody

CAT. NO. APA17332

KEY FEATURES

Target	HCCA2	Source / Host	Rabbit
Reactivity	Human, Mouse, Rat	Clonality	Polyclonal
Applications	WB	Conjugation	Unconjugated
Form / Buffer	Liquid in 0.42% Potassium phosphate, 0.87% Sodium chloride, pH 7.3, 30% glycerol, and 0.01% sodium azide.		Storage at -20°C

BACKGROUND

Associates with the INO80 chromatin remodeling complex, which is responsible for transcriptional regulation, DNA repair, and replication . Enhances transcription activation by YY1 . Plays a role in cell cycle regulation .

APPLICATION

To ensure optimal assay performance, AREX recommends conducting reagent titration tailored to each testing system for optimal detection results.

WB	1:500 - 1:2000
----	----------------

*Results are sample-specific. Please refer to your local assay conditions and test parameters for reference.

PRODUCT OVERVIEW

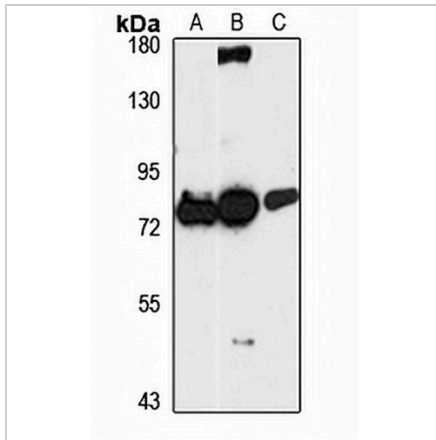
Description	Rabbit polyclonal antibody to HCCA2
Specificity	Recognizes endogenous levels of HCCA2 protein
Antibody Type	Primary antibody
Immunogen	Recombinant fusion protein of human HCCA2. The exact sequence is proprietary.
Purification	The antibody was purified by immunogen affinity chromatography.
Molecular Weight	Predicted: 50; Observed: 88 kD
Form/Buffer	Liquid in 0.42% Potassium phosphate, 0.87% Sodium chloride, pH 7.3, 30% glycerol, and 0.01% sodium azide.
Alternative Names	HCCA2; YY1AP; YY1-associated protein 1; Hepatocellular carcinoma susceptibility protein; Hepatocellular carcinoma-associated protein 2
Gene Symbol	YY1AP1
Entrez Gene	55249(Human)
SwissProt	Q9H869(Human)

*AREX continuously optimizes our products. Webpage content may not reflect the latest updates. For inquiries, please contact info@arexbio.com or your local distributor.

*Clone Number, Reactivity, Source/Host and Clonality can be found in the product name and Key Features section above.

DATASHEET**HCCA2 Rabbit Polyclonal Antibody**

CAT. NO. APA17332

DATA

Western blot analysis of HCCA2 expression in HepG2 (A), mouse liver (B), rat lung (C) whole cell lysates. (Predicted band size: 50; 75-97 kD; Observed band size: 88 kD)

STORAGE

Store at 4°C short term. For long term storage, store at -20°C, avoiding freeze/thaw cycles.

NOTE

For Research Use Only. Not for diagnostic, therapeutics, prophylactic or in vivo use.