

DATASHEET

ZBED1 Rabbit Polyclonal Antibody

CAT. NO. APA17334

KEY FEATURES

Target	ZBED1	Source / Host	Rabbit
Reactivity	Human, Mouse, Rat	Clonality	Polyclonal
Applications	WB, IHC, IF/ICC	Conjugation	Unconjugated
Form / Buffer	Liquid in 0.42% Potassium phosphate, 0.87% Sodium chloride, pH 7.3, 30% glycerol, and 0.01% sodium azide.		Storage at -20°C

BACKGROUND

Functions as an E3-type small ubiquitin-like modifier (SUMO) ligase which sumoylates CHD3/Mi2-alpha, causing its release from DNA ligase which sumoylates CHD3/Mi2-alpha, causing its release from DNA. This results in suppression of CHD3/Mi2-alpha transcription repression, increased recruitment of RNA polymerase II to gene promoters and positive regulation of transcription including H1-5 and ribosomal proteins such as: RPS6, RPL10A, and RPL12. The resulting increased transcriptional activity drives cell proliferation. Binds to 5'-TGTCG[CT]GA[CT]A-3' consensus sequences in gene promoters of ribosomal proteins.

APPLICATION

To ensure optimal assay performance, AREX recommends conducting reagent titration tailored to each testing system for optimal detection results.

WB	1:500 - 1:2000
IHC	1:50 - 1:200
IF/ICC	1:50 - 1:200

*Results are sample-specific. Please refer to your local assay conditions and test parameters for reference.

PRODUCT OVERVIEW

Description	Rabbit polyclonal antibody to ZBED1
Specificity	Recognizes endogenous levels of ZBED1 protein
Antibody Type	Primary antibody
Immunogen	Recombinant fusion protein of human ZBED1. The exact sequence is proprietary.
Purification	The antibody was purified by immunogen affinity chromatography.
Molecular Weight	Predicted: 78 kD; Observed: 78 kD
Form/Buffer	Liquid in 0.42% Potassium phosphate, 0.87% Sodium chloride, pH 7.3, 30% glycerol, and 0.01% sodium azide.
Alternative Names	ALTE; DREF; KIAA0785; TRAMP; Zinc finger BED domain-containing protein 1; Putative Ac-like transposable element; dREF homolog
Gene Symbol	ZBED1
Entrez Gene	9189(Human)
SwissProt	O96006(Human)

*AREX continuously optimizes our products. Webpage content may not reflect the latest updates. For inquiries, please contact info@arexbio.com or your local distributor.

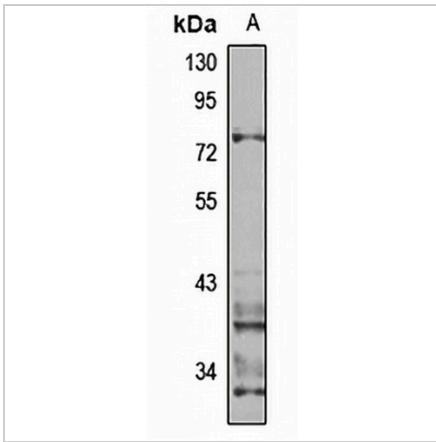
*Clone Number, Reactivity, Source/Host and Clonality can be found in the product name and Key Features section above.

DATASHEET

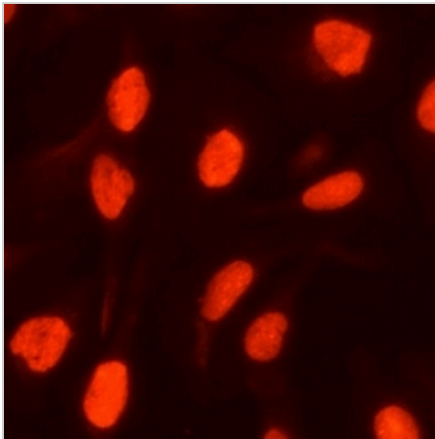
ZBED1 Rabbit Polyclonal Antibody

CAT. NO. APA17334

DATA



Western blot analysis of ZBED1 expression in BT474 (A) whole cell lysates. (Predicted band size: 78 kD; Observed band size: 78 kD)



Immunofluorescent analysis of ZBED1 staining in U2OS cells. Formalin-fixed cells were permeabilized with 0.1% Triton X-100 in TBS for 5-10 minutes and blocked with 3% BSA-PBS for 30 minutes at room temperature. Cells were probed with the primary antibody in 3% BSA-PBS and incubated overnight at 4 °C in a humidified chamber. Cells were washed with PBST and incubated with a Alexa Fluor 594-conjugated secondary antibody (red) in PBS at room temperature in the dark.

STORAGE

Store at 4°C short term. For long term storage, store at -20°C, avoiding freeze/thaw cycles.

NOTE

For Research Use Only. Not for diagnostic, therapeutics, prophylactic or in vivo use.