

DATASHEET

ZBTB38 Rabbit Polyclonal Antibody

CAT. NO. APA17338

KEY FEATURES

Target	ZBTB38	Source / Host	Rabbit
Reactivity	Human	Clonality	Polyclonal
Applications	WB	Conjugation	Unconjugated
Form / Buffer	Liquid in 0.42% Potassium phosphate, 0.87% Sodium chloride, pH 7.3, 30% glycerol, and 0.01% sodium azide.		Storage at -20°C

BACKGROUND

Transcriptional regulator with bimodal DNA-binding specificity. Binds with a higher affinity to methylated CpG dinucleotides in the consensus sequence 5'-CGCG-3' but can also bind to E-box elements (5'-CACGTG-3'). Can also bind specifically to a single methyl-CpG pair. Represses transcription in a methyl-CpG-dependent manner. Can also bind specifically to a single methyl-CpG pair. Represses transcription in a methyl-CpG-dependent manner. Plays an important role in regulating DNA replication and common fragile sites (CFS) stability in a RBBP6- and MCM10-dependent manner; represses expression of MCM10 which plays an important role in DNA-replication. Acts as a transcriptional activator. May be involved in the differentiation and/or survival of late postmitotic neurons.

APPLICATION

To ensure optimal assay performance, AREX recommends conducting reagent titration tailored to each testing system for optimal detection results.

WB	1:500 - 1:2000
----	----------------

*Results are sample-specific. Please refer to your local assay conditions and test parameters for reference.

PRODUCT OVERVIEW

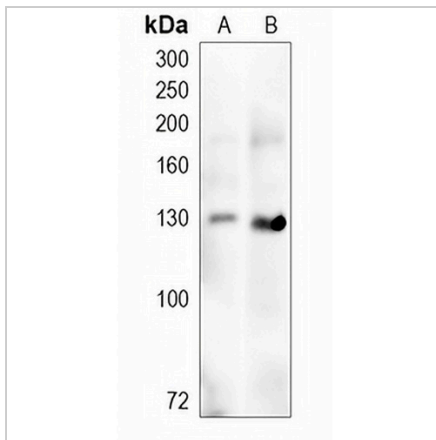
Description	Rabbit polyclonal antibody to ZBTB38
Specificity	Recognizes endogenous levels of ZBTB38 protein
Antibody Type	Primary antibody
Immunogen	Recombinant fusion protein of human ZBTB38. The exact sequence is proprietary.
Purification	The antibody was purified by immunogen affinity chromatography.
Molecular Weight	Predicted: 134 kD; Observed: 134 kD
Form/Buffer	Liquid in 0.42% Potassium phosphate, 0.87% Sodium chloride, pH 7.3, 30% glycerol, and 0.01% sodium azide.
Alternative Names	Zinc finger and BTB domain-containing protein 38
Gene Symbol	ZBTB38
Entrez Gene	253461(Human)
SwissProt	Q8NAP3(Human)

*AREX continuously optimizes our products. Webpage content may not reflect the latest updates. For inquiries, please contact info@arexbio.com or your local distributor.

*Clone Number, Reactivity, Source/Host and Clonality can be found in the product name and Key Features section above.

DATASHEET**ZBTB38 Rabbit Polyclonal Antibody**

CAT. NO. APA17338

DATA

Western blot analysis of ZBTB38 expression in K562 (A), U87 (B) whole cell lysates.
(Predicted band size: 134 kD; Observed band size: 134 kD)

STORAGE

Store at 4°C short term. For long term storage, store at -20°C, avoiding freeze/thaw cycles.

NOTE

For Research Use Only. Not for diagnostic, therapeutics, prophylactic or in vivo use.