

DATASHEET

ZBTB6 Rabbit Polyclonal Antibody

CAT. NO. APA17340

KEY FEATURES

Target	ZBTB6	Source / Host	Rabbit
Reactivity	Human, Mouse, Rat	Clonality	Polyclonal
Applications	WB	Conjugation	Unconjugated
Form / Buffer	Liquid in 0.42% Potassium phosphate, 0.87% Sodium chloride, pH 7.3, 30% glycerol, and 0.01% sodium azide.		Storage at -20°C

BACKGROUND

May be involved in transcriptional regulation.

APPLICATION

To ensure optimal assay performance, AREX recommends conducting reagent titration tailored to each testing system for optimal detection results.

WB	1:500 - 1:2000
----	----------------

*Results are sample-specific. Please refer to your local assay conditions and test parameters for reference.

PRODUCT OVERVIEW

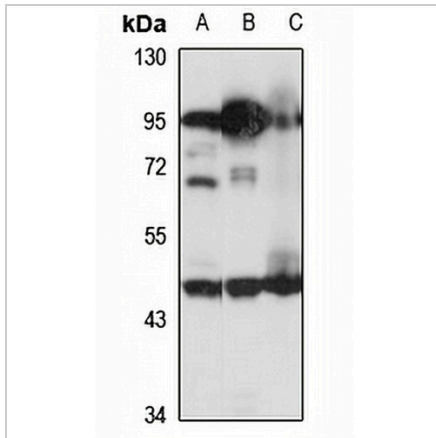
Description	Rabbit polyclonal antibody to ZBTB6
Specificity	Recognizes endogenous levels of ZBTB6 protein
Antibody Type	Primary antibody
Immunogen	Recombinant fusion protein of human ZBTB6. The exact sequence is proprietary.
Purification	The antibody was purified by immunogen affinity chromatography.
Molecular Weight	Predicted: 48 kD; Observed: 48 kD
Form/Buffer	Liquid in 0.42% Potassium phosphate, 0.87% Sodium chloride, pH 7.3, 30% glycerol, and 0.01% sodium azide.
Alternative Names	ZID; ZNF482; Zinc finger and BTB domain-containing protein 6; Zinc finger protein 482; Zinc finger protein with interaction domain
Gene Symbol	ZBTB6
Entrez Gene	10773(Human); 241322(Mouse)
SwissProt	Q15916(Human); Q8K088(Mouse)

*AREX continuously optimizes our products. Webpage content may not reflect the latest updates. For inquiries, please contact info@arexbio.com or your local distributor.

*Clone Number, Reactivity, Source/Host and Clonality can be found in the product name and Key Features section above.

DATASHEET**ZBTB6 Rabbit Polyclonal Antibody**

CAT. NO. APA17340

DATA

Western blot analysis of ZBTB6 expression in HEK293T (A), mouse thymus (B), rat brain (C) whole cell lysates. (Predicted band size: 48 kD; Observed band size: 48 kD)

STORAGE

Store at 4°C short term. For long term storage, store at -20°C, avoiding freeze/thaw cycles.

NOTE

For Research Use Only. Not for diagnostic, therapeutics, prophylactic or in vivo use.