

DATASHEET

ZC3H12D Rabbit Polyclonal Antibody

CAT. NO. APA17343

KEY FEATURES

Target	ZC3H12D	Source / Host	Rabbit
Reactivity	Human, Mouse, Rat	Clonality	Polyclonal
Applications	WB, IF/ICC	Conjugation	Unconjugated
Form / Buffer	Liquid in 0.42% Potassium phosphate, 0.87% Sodium chloride, pH 7.3, 30% glycerol, and 0.01% sodium azide.		Storage at-20°C

BACKGROUND

May regulate cell growth likely by suppressing RB1 phosphorylation . May function as RNase and regulate the levels of target RNA species (Potential). In association with ZC3H12A enhances the degradation of interleukin IL-6 mRNA level in activated macrophages . Serve as a tumor suppressor in certain leukemia cells . Overexpression inhibits the G1 to S phase progression through suppression of RB1 phosphorylation .

APPLICATION

To ensure optimal assay performance, AREX recommends conducting reagent titration tailored to each testing system for optimal detection results.

WB	1:500 - 1:2000
IF/ICC	1:50 - 1:200

*Results are sample-specific. Please refer to your local assay conditions and test parameters for reference.

PRODUCT OVERVIEW

Description	Rabbit polyclonal antibody to ZC3H12D
Specificity	Recognizes endogenous levels of ZC3H12D protein
Antibody Type	Primary antibody
Immunogen	Recombinant fusion protein of human ZC3H12D. The exact sequence is proprietary.
Purification	The antibody was purified by immunogen affinity chromatography.
Molecular Weight	Predicted: 25; Observed: 70 kD
Form/Buffer	Liquid in 0.42% Potassium phosphate, 0.87% Sodium chloride, pH 7.3, 30% glycerol, and 0.01% sodium azide.
Alternative Names	C6orf95; MCPIP4; TFL; Probable ribonuclease ZC3H12D; MCP-induced protein 4; Transformed follicular lymphoma; Zinc finger CCCH domain-containing protein 12D; p34
Gene Symbol	ZC3H12D
Entrez Gene	340152(Human); 237256(Mouse)
SwissProt	A2A288(Human); Q8BIY3(Mouse)

*AREX continuously optimizes our products. Webpage content may not reflect the latest updates. For inquiries, please contact info@arexbio.com or your local distributor.

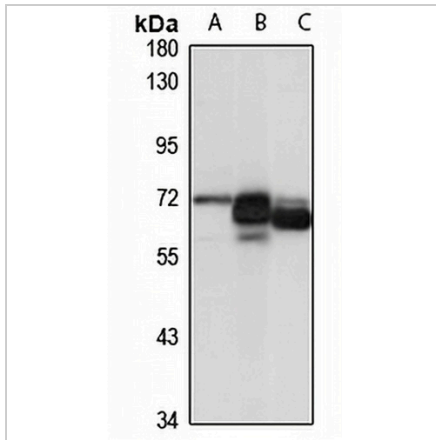
*Clone Number, Reactivity, Source/Host and Clonality can be found in the product name and Key Features section above.

DATASHEET

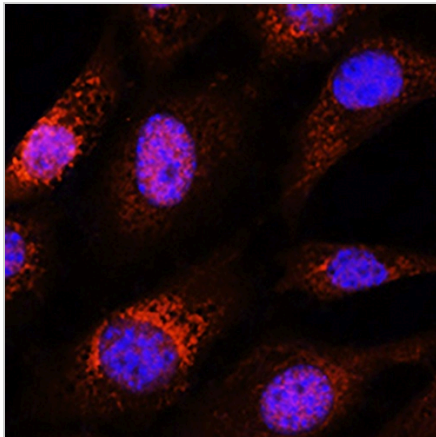
ZC3H12D Rabbit Polyclonal Antibody

CAT. NO. APA17343

DATA



Western blot analysis of ZC3H12D expression in THP1 (A), mouse liver (B), rat spleen (C) whole cell lysates. (Predicted band size: 25; 36; 58 kD; Observed band size: 70 kD)



Immunofluorescent analysis of ZC3H12D staining in NIH3T3 cells. Formalin-fixed cells were permeabilized with 0.1% Triton X-100 in TBS for 5-10 minutes and blocked with 3% BSA-PBS for 30 minutes at room temperature. Cells were probed with the primary antibody in 3% BSA-PBS and incubated overnight at 4 °C in a humidified chamber. Cells were washed with PBST and incubated with a AREX® Fluor 594-conjugated secondary antibody (red) in PBS at room temperature in the dark. DAPI was used to stain the cell nuclei (blue).

STORAGE

Store at 4°C short term. For long term storage, store at -20°C, avoiding freeze/thaw cycles.

NOTE

For Research Use Only. Not for diagnostic, therapeutics, prophylactic or in vivo use.