

DATASHEET

ZC3HAV1 Rabbit Polyclonal Antibody

CAT. NO. APA17345

KEY FEATURES

Target	ZC3HAV1	Source / Host	Rabbit
Reactivity	Human, Mouse, Rat	Clonality	Polyclonal
Applications	WB	Conjugation	Unconjugated
Form / Buffer	Liquid in 0.42% Potassium phosphate, 0.87% Sodium chloride, pH 7.3, 30% glycerol, and 0.01% sodium azide.		Storage at-20°C

BACKGROUND

Antiviral protein which inhibits the replication of viruses by recruiting the cellular RNA degradation machineries to degrade the viral mRNAs. Binds to a ZAP-responsive element (ZRE) present in the target viral mRNA, recruits cellular poly(A)-specific ribonuclease PARN to remove the poly(A) tail, and the 3'-5' exoribonuclease complex exosome to degrade the RNA body from the 3'-end. It also recruits the decapping complex DCP1-DCP2 through RNA helicase p72 (DDX17) to remove the cap structure of the viral mRNA to initiate its degradation from the 5'-end. Its target viruses belong to families which include retroviridae, including human immunodeficiency virus type 1, filoviridae: ebola virus (EBOV) and marburg virus (MARV), togaviridae: sindbis virus (SINV) and Ross river virus (RRV).

APPLICATION

To ensure optimal assay performance, AREX recommends conducting reagent titration tailored to each testing system for optimal detection results.

WB	1:500 - 1:2000
----	----------------

*Results are sample-specific. Please refer to your local assay conditions and test parameters for reference.

PRODUCT OVERVIEW

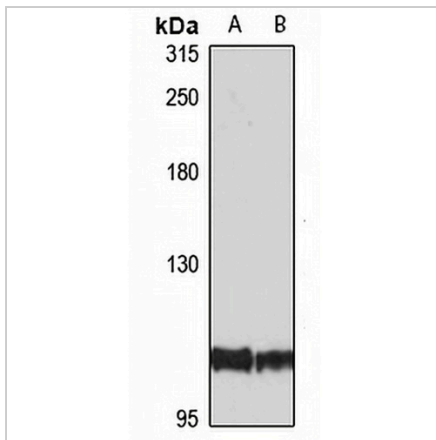
Description	Rabbit polyclonal antibody to ZC3HAV1
Specificity	Recognizes endogenous levels of ZC3HAV1 protein
Antibody Type	Primary antibody
Immunogen	Recombinant fusion protein of human ZC3HAV1. The exact sequence is proprietary.
Purification	The antibody was purified by immunogen affinity chromatography.
Molecular Weight	Predicted: 101 kD; Observed: 101 kD
Form/Buffer	Liquid in 0.42% Potassium phosphate, 0.87% Sodium chloride, pH 7.3, 30% glycerol, and 0.01% sodium azide.
Alternative Names	ZC3HDC2; Zinc finger CCCH-type antiviral protein 1; ADP-ribosyltransferase diphtheria toxin-like 13; ARTD13; Zinc finger CCCH domain-containing protein 2; Zinc finger antiviral protein; ZAP
Gene Symbol	ZC3HAV1
Entrez Gene	56829(Human); 78781(Mouse)
SwissProt	Q7Z2W4(Human); Q3UPF5(Mouse); Q8K3Y6(Rat)

*AREX continuously optimizes our products. Webpage content may not reflect the latest updates. For inquiries, please contact info@arexbio.com or your local distributor.

*Clone Number, Reactivity, Source/Host and Clonality can be found in the product name and Key Features section above.

DATASHEET**ZC3HAV1 Rabbit Polyclonal Antibody**

CAT. NO. APA17345

DATA

Western blot analysis of ZC3HAV1 expression in LO2 (A), mouse lung (B) whole cell lysates. (Predicted band size: 101 kD; Observed band size: 101 kD)

STORAGE

Store at 4°C short term. For long term storage, store at -20°C, avoiding freeze/thaw cycles.

NOTE

For Research Use Only. Not for diagnostic, therapeutics, prophylactic or in vivo use.