

DATASHEET

ZCCHC3 Rabbit Polyclonal Antibody

CAT. NO. APA17346

KEY FEATURES

Target	ZCCHC3	Source / Host	Rabbit
Reactivity	Human, Mouse, Rat	Clonality	Polyclonal
Applications	WB, IF/ICC	Conjugation	Unconjugated
Form / Buffer	Liquid in 0.42% Potassium phosphate, 0.87% Sodium chloride, pH 7.3, 30% glycerol, and 0.01% sodium azide.		Storage at -20°C

BACKGROUND

Nucleic acid-binding protein involved in innate immune response to DNA and RNA viruses . Binds DNA and RNA in the cytoplasm and acts by promoting recognition of viral nucleic acids by virus sensors, such as RIGI, IFIH1/MDA5 and CGAS . Acts as a co-sensor for recognition of double-stranded DNA (dsDNA) by cGAS in the cytoplasm, thereby playing a role in innate immune response to cytosolic dsDNA and DNA virus . Binds dsDNA and probably acts by promoting sensing of dsDNA by CGAS, leading to enhance CGAS oligomerization and activation .

APPLICATION

To ensure optimal assay performance, AREX recommends conducting reagent titration tailored to each testing system for optimal detection results.

WB	1:500 - 1:2000
IF/ICC	1:50 - 1:200

*Results are sample-specific. Please refer to your local assay conditions and test parameters for reference.

PRODUCT OVERVIEW

Description	Rabbit polyclonal antibody to ZCCHC3
Specificity	Recognizes endogenous levels of ZCCHC3 protein
Antibody Type	Primary antibody
Immunogen	Recombinant fusion protein of human ZCCHC3. The exact sequence is proprietary.
Purification	The antibody was purified by immunogen affinity chromatography.
Molecular Weight	Predicted: 43 kD; Observed: 43 kD
Form/Buffer	Liquid in 0.42% Potassium phosphate, 0.87% Sodium chloride, pH 7.3, 30% glycerol, and 0.01% sodium azide.
Alternative Names	C20orf99; Zinc finger CCHC domain-containing protein 3
Gene Symbol	ZCCHC3
Entrez Gene	85364(Human)
SwissProt	Q9NUD5(Human)

*AREX continuously optimizes our products. Webpage content may not reflect the latest updates. For inquiries, please contact info@arexbio.com or your local distributor.

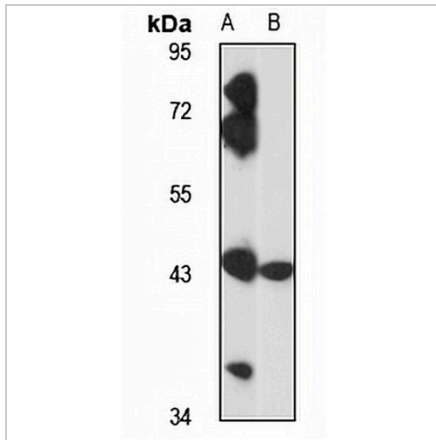
*Clone Number, Reactivity, Source/Host and Clonality can be found in the product name and Key Features section above.

DATASHEET

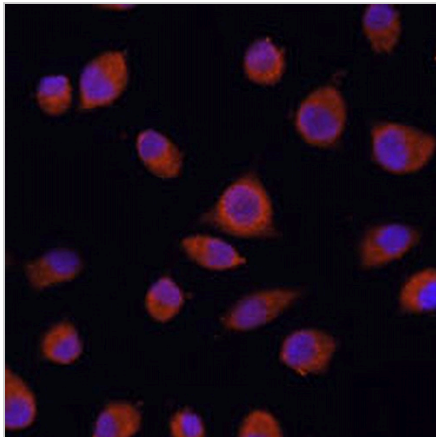
ZCCHC3 Rabbit Polyclonal Antibody

CAT. NO. APA17346

DATA



Western blot analysis of ZCCHC3 expression in LO2 (A), mouse liver (B) whole cell lysates. (Predicted band size: 43 kD; Observed band size: 43 kD)



Immunofluorescent analysis of ZCCHC3 staining in L929 cells. Formalin-fixed cells were permeabilized with 0.1% Triton X-100 in TBS for 5-10 minutes and blocked with 3% BSA-PBS for 30 minutes at room temperature. Cells were probed with the primary antibody in 3% BSA-PBS and incubated overnight at 4 °C in a humidified chamber. Cells were washed with PBST and incubated with a AREX® Fluor 594-conjugated secondary antibody (red) in PBS at room temperature in the dark. DAPI was used to stain the cell nuclei (blue).

STORAGE

Store at 4°C short term. For long term storage, store at -20°C, avoiding freeze/thaw cycles.

NOTE

For Research Use Only. Not for diagnostic, therapeutics, prophylactic or in vivo use.