

DATASHEET

ZCCHC8 Rabbit Polyclonal Antibody

CAT. NO. APA17347

KEY FEATURES

Target	ZCCHC8	Source / Host	Rabbit
Reactivity	Human, Mouse	Clonality	Polyclonal
Applications	WB	Conjugation	Unconjugated
Form / Buffer	Liquid in 0.42% Potassium phosphate, 0.87% Sodium chloride, pH 7.3, 30% glycerol, and 0.01% sodium azide.		Storage at-20°C

BACKGROUND

Scaffolding subunit of the trimeric nuclear exosome targeting (NEXT) complex that is involved in the surveillance and turnover of aberrant transcripts and non-coding RNAs complex that is involved in the surveillance and turnover of aberrant transcripts and non-coding RNAs . NEXT functions as an RNA exosome cofactor that directs a subset of non-coding short-lived RNAs for exosomal degradation. May be involved in pre-mRNA splicing (Probable). It is required for 3'-end maturation of telomerase RNA component (TERC), TERC 3'-end targeting to the nuclear RNA exosome, and for telomerase function .

APPLICATION

To ensure optimal assay performance, AREX recommends conducting reagent titration tailored to each testing system for optimal detection results.

WB	1:500 - 1:2000
----	----------------

*Results are sample-specific. Please refer to your local assay conditions and test parameters for reference.

PRODUCT OVERVIEW

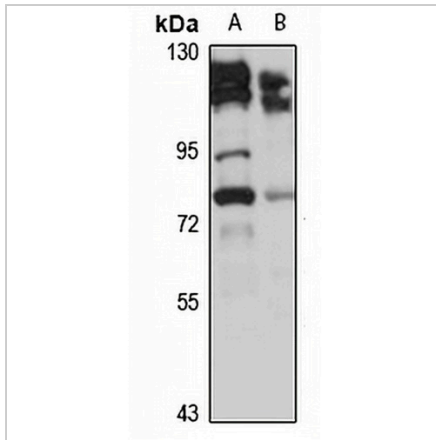
Description	Rabbit polyclonal antibody to ZCCHC8
Specificity	Recognizes endogenous levels of ZCCHC8 protein
Antibody Type	Primary antibody
Immunogen	Recombinant fusion protein of human ZCCHC8. The exact sequence is proprietary.
Purification	The antibody was purified by immunogen affinity chromatography.
Molecular Weight	Predicted: 51; Observed: 78 kD
Form/Buffer	Liquid in 0.42% Potassium phosphate, 0.87% Sodium chloride, pH 7.3, 30% glycerol, and 0.01% sodium azide.
Alternative Names	Zinc finger CCHC domain-containing protein 8; TRAMP-like complex RNA-binding factor ZCCHC8
Gene Symbol	ZCCHC8
Entrez Gene	55596(Human); 70650(Mouse)
SwissProt	Q6NZY4(Human); Q9CYA6(Mouse)

*AREX continuously optimizes our products. Webpage content may not reflect the latest updates. For inquiries, please contact info@arexbio.com or your local distributor.

*Clone Number, Reactivity, Source/Host and Clonality can be found in the product name and Key Features section above.

DATASHEET**ZCCHC8 Rabbit Polyclonal Antibody**

CAT. NO. APA17347

DATA

Western blot analysis of ZCCHC8 expression in HEK293T (A), mouse thymus (B) whole cell lysates. (Predicted band size: 51; 78 kD; Observed band size: 78 kD)

STORAGE

Store at 4°C short term. For long term storage, store at -20°C, avoiding freeze/thaw cycles.

NOTE

For Research Use Only. Not for diagnostic, therapeutics, prophylactic or in vivo use.