

DATASHEET

ZDHHC8 Rabbit Polyclonal Antibody

CAT. NO. APA17349

KEY FEATURES

Target	ZDHHC8	Source / Host	Rabbit
Reactivity	Human, Mouse	Clonality	Polyclonal
Applications	WB	Conjugation	Unconjugated
Form / Buffer	Liquid in 0.42% Potassium phosphate, 0.87% Sodium chloride, pH 7.3, 30% glycerol, and 0.01% sodium azide.		Storage at -20°C

BACKGROUND

Palmitoyltransferase that catalyzes the addition of palmitate onto various protein substrates and therefore functions in several unrelated biological processes (Probable). Through the palmitoylation of ABCA1 regulates the localization of the transporter to the plasma membrane and thereby regulates its function in cholesterol and phospholipid efflux (Probable). Could also palmitoylate the D(2) dopamine receptor DRD2 and regulate its stability and localization to the plasma membrane (Probable). Could also play a role in glutamatergic transmission .

APPLICATION

To ensure optimal assay performance, AREX recommends conducting reagent titration tailored to each testing system for optimal detection results.

WB	1:500 - 1:2000
----	----------------

*Results are sample-specific. Please refer to your local assay conditions and test parameters for reference.

PRODUCT OVERVIEW

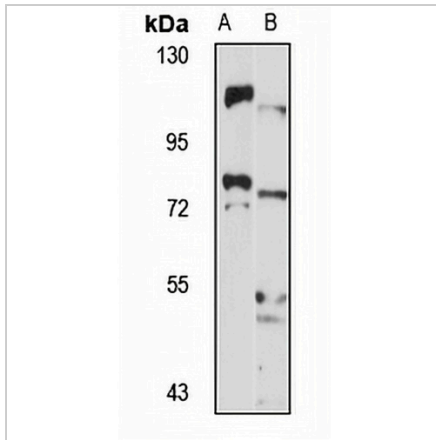
Description	Rabbit polyclonal antibody to ZDHHC8
Specificity	Recognizes endogenous levels of ZDHHC8 protein
Antibody Type	Primary antibody
Immunogen	Recombinant fusion protein of human ZDHHC8. The exact sequence is proprietary.
Purification	The antibody was purified by immunogen affinity chromatography.
Molecular Weight	Predicted: 81 kD; Observed: 81 kD
Form/Buffer	Liquid in 0.42% Potassium phosphate, 0.87% Sodium chloride, pH 7.3, 30% glycerol, and 0.01% sodium azide.
Alternative Names	KIAA1292; ZDHHCL1; ZNF378; Probable palmitoyltransferase ZDHHC8; Zinc finger DHHC domain-containing protein 8; DHHC-8; Zinc finger protein 378
Gene Symbol	ZDHHC8
Entrez Gene	29801(Human); 27801(Mouse)
SwissProt	Q9ULC8(Human); Q5Y5T5(Mouse)

*AREX continuously optimizes our products. Webpage content may not reflect the latest updates. For inquiries, please contact info@arexbio.com or your local distributor.

*Clone Number, Reactivity, Source/Host and Clonality can be found in the product name and Key Features section above.

DATASHEET**ZDHHC8 Rabbit Polyclonal Antibody**

CAT. NO. APA17349

DATA

Western blot analysis of ZDHHC8 expression in K562 (A), mouse brain (B) whole cell lysates. (Predicted band size: 81 kD; Observed band size: 81 kD)

STORAGE

Store at 4°C short term. For long term storage, store at -20°C, avoiding freeze/thaw cycles.

NOTE

For Research Use Only. Not for diagnostic, therapeutics, prophylactic or in vivo use.