

**DATASHEET**

**REX-1 Rabbit Polyclonal Antibody**

CAT. NO. APA17350

**KEY FEATURES**

Target	REX-1	Source / Host	Rabbit
Reactivity	Human, Mouse	Clonality	Polyclonal
Applications	WB	Conjugation	Unconjugated
Form / Buffer	Liquid in 0.42% Potassium phosphate, 0.87% Sodium chloride, pH 7.3, 30% glycerol, and 0.01% sodium azide.		Storage at -20°C

**BACKGROUND**

Involved in the reprogramming of X-chromosome inactivation during the acquisition of pluripotency. Required for efficient elongation of TSIX, a non-coding RNA antisense to XIST. Binds DXPas34 enhancer within the TSIX promoter. Involved in ES cell self-renewal .

**APPLICATION**

To ensure optimal assay performance, AREX recommends conducting reagent titration tailored to each testing system for optimal detection results.

WB	1:500 - 1:2000
----	----------------

\*Results are sample-specific. Please refer to your local assay conditions and test parameters for reference.

**PRODUCT OVERVIEW**

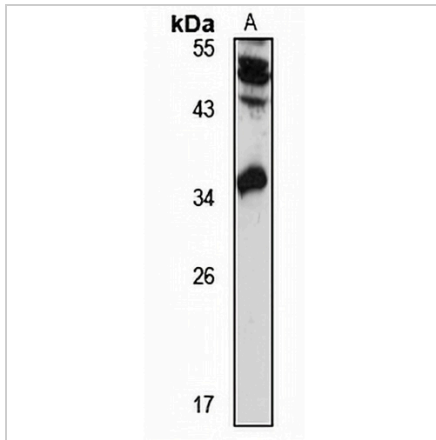
Description	Rabbit polyclonal antibody to REX-1
Specificity	Recognizes endogenous levels of REX-1 protein
Antibody Type	Primary antibody
Immunogen	Recombinant fusion protein of human REX-1. The exact sequence is proprietary.
Purification	The antibody was purified by immunogen affinity chromatography.
Molecular Weight	Predicted: 34 kD; Observed: 35 kD
Form/Buffer	Liquid in 0.42% Potassium phosphate, 0.87% Sodium chloride, pH 7.3, 30% glycerol, and 0.01% sodium azide.
Alternative Names	REX1; ZNF754; Zinc finger protein 42 homolog; Zfp-42; Reduced expression protein 1; REX-1; hREX-1; Zinc finger protein 754
Gene Symbol	ZFP42
Entrez Gene	132625(Human); 22702(Mouse)
SwissProt	Q96MM3(Human); P22227(Mouse)

\*AREX continuously optimizes our products. Webpage content may not reflect the latest updates. For inquiries, please contact [info@arexbio.com](mailto:info@arexbio.com) or your local distributor.

\*Clone Number, Reactivity, Source/Host and Clonality can be found in the product name and Key Features section above.

**DATASHEET****REX-1 Rabbit Polyclonal Antibody**

CAT. NO. APA17350

**DATA**

Western blot analysis of REX-1 expression in HEK293T (A) whole cell lysates. (Predicted band size: 34 kD; Observed band size: 35 kD)

**STORAGE**

Store at 4°C short term. For long term storage, store at -20°C, avoiding freeze/thaw cycles.

**NOTE**

For Research Use Only. Not for diagnostic, therapeutics, prophylactic or in vivo use.