

DATASHEET

ZFYVE1 Rabbit Polyclonal Antibody

CAT. NO. APA17351

KEY FEATURES

Target	ZFYVE1	Source / Host	Rabbit
Reactivity	Human, Mouse	Clonality	Polyclonal
Applications	WB	Conjugation	Unconjugated
Form / Buffer	Liquid in 0.42% Potassium phosphate, 0.87% Sodium chloride, pH 7.3, 30% glycerol, and 0.01% sodium azide.		Storage at-20°C

BACKGROUND

Plays a role in the formation of lipid droplets (LDs) which are storage organelles at the center of lipid and energy homeostasis which are storage organelles at the center of lipid and energy homeostasis . Regulates the morphology, size and distribution of LDs . Mediates the formation of endoplasmic reticulum-lipid droplets (ER-LD) contacts by forming a complex with RAB18 and ZW10 . Binds to phosphatidylinositol 3-phosphate (PtdIns3P) through FYVE-type zinc finger .

APPLICATION

To ensure optimal assay performance, AREX recommends conducting reagent titration tailored to each testing system for optimal detection results.

WB	1:500 - 1:1000
----	----------------

*Results are sample-specific. Please refer to your local assay conditions and test parameters for reference.

PRODUCT OVERVIEW

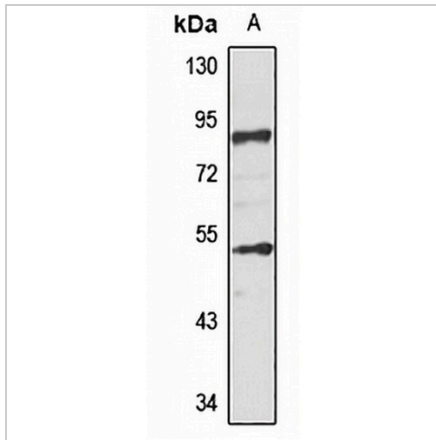
Description	Rabbit polyclonal antibody to ZFYVE1
Specificity	Recognizes endogenous levels of ZFYVE1 protein
Antibody Type	Primary antibody
Immunogen	Recombinant fusion protein of human ZFYVE1. The exact sequence is proprietary.
Purification	The antibody was purified by immunogen affinity chromatography.
Molecular Weight	Predicted: 40; Observed: 87 kD
Form/Buffer	Liquid in 0.42% Potassium phosphate, 0.87% Sodium chloride, pH 7.3, 30% glycerol, and 0.01% sodium azide.
Alternative Names	DFCP1; KIAA1589; TAFF1; ZNFN2A1; Zinc finger FYVE domain-containing protein 1; Double FYVE-containing protein 1; SR3; Tandem FYVE fingers-1
Gene Symbol	ZFYVE1
Entrez Gene	53349(Human); 217695(Mouse)
SwissProt	Q9HBF4(Human); Q810J8(Mouse)

*AREX continuously optimizes our products. Webpage content may not reflect the latest updates. For inquiries, please contact info@arexbio.com or your local distributor.

*Clone Number, Reactivity, Source/Host and Clonality can be found in the product name and Key Features section above.

DATASHEET**ZFYVE1 Rabbit Polyclonal Antibody**

CAT. NO. APA17351

DATA

Western blot analysis of ZFYVE1 expression in HEK293T (A) whole cell lysates. (Predicted band size: 40; 85; 87 kD; Observed band size: 87 kD)

STORAGE

Store at 4°C short term. For long term storage, store at -20°C, avoiding freeze/thaw cycles.

NOTE

For Research Use Only. Not for diagnostic, therapeutics, prophylactic or in vivo use.