

DATASHEET

ZFYVE27 Rabbit Polyclonal Antibody

CAT. NO. APA17353

KEY FEATURES

Target	ZFYVE27	Source / Host	Rabbit
Reactivity	Human, Mouse, Rat	Clonality	Polyclonal
Applications	WB	Conjugation	Unconjugated
Form / Buffer	Liquid in 0.42% Potassium phosphate, 0.87% Sodium chloride, pH 7.3, 30% glycerol, and 0.01% sodium azide.		Storage at -20°C

BACKGROUND

Key regulator of RAB11-dependent vesicular trafficking during neurite extension through polarized membrane transport . Promotes axonal elongation and contributes to the establishment of neuronal cell polarity . Involved in nerve growth factor-induced neurite formation in VAPA-dependent manner . Contributes to both the formation and stabilization of the tubular ER network . Involved in ER morphogenesis by regulating the sheet-to-tubule balance and possibly the density of tubule interconnections . Acts as an adapter protein and facilitates the interaction of KIF5A with VAPA, VAPB, SURF4, RAB11A, RAB11B and RTN3 and the ZFYVE27-KIF5A complex contributes to the transport of these proteins in neurons.

APPLICATION

To ensure optimal assay performance, AREX recommends conducting reagent titration tailored to each testing system for optimal detection results.

WB	1:500 - 1:2000
----	----------------

*Results are sample-specific. Please refer to your local assay conditions and test parameters for reference.

PRODUCT OVERVIEW

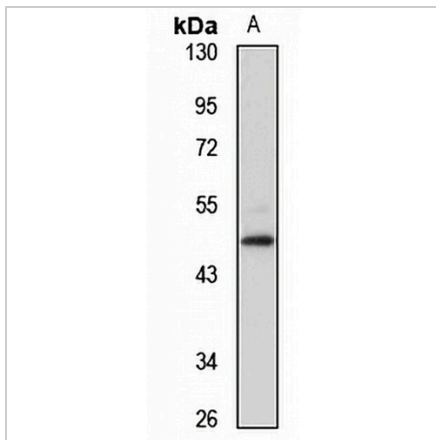
Description	Rabbit polyclonal antibody to ZFYVE27
Specificity	Recognizes endogenous levels of ZFYVE27 protein
Antibody Type	Primary antibody
Immunogen	Recombinant fusion protein of human ZFYVE27. The exact sequence is proprietary.
Purification	The antibody was purified by immunogen affinity chromatography.
Molecular Weight	Predicted: 31; Observed: 46 kD
Form/Buffer	Liquid in 0.42% Potassium phosphate, 0.87% Sodium chloride, pH 7.3, 30% glycerol, and 0.01% sodium azide.
Alternative Names	Protrudin; Zinc finger FYVE domain-containing protein 27
Gene Symbol	ZFYVE27
Entrez Gene	118813(Human); 319740(Mouse); 309376(Rat)
SwissProt	Q5T4F4(Human); Q3TXX3(Mouse); Q6P7B7(Rat)

*AREX continuously optimizes our products. Webpage content may not reflect the latest updates. For inquiries, please contact info@arexbio.com or your local distributor.

*Clone Number, Reactivity, Source/Host and Clonality can be found in the product name and Key Features section above.

DATASHEET**ZFYVE27 Rabbit Polyclonal Antibody**

CAT. NO. APA17353

DATA

Western blot analysis of ZFYVE27 expression in DU145 (A) whole cell lysates. (Predicted band size: 31; 34; 35; 41; 45; 46 kD; Observed band size: 46 kD)

STORAGE

Store at 4°C short term. For long term storage, store at -20°C, avoiding freeze/thaw cycles.

NOTE

For Research Use Only. Not for diagnostic, therapeutics, prophylactic or in vivo use.