

DATASHEET

ZIC3 Rabbit Polyclonal Antibody

CAT. NO. APA17355

KEY FEATURES

Target	ZIC3	Source / Host	Rabbit
Reactivity	Human, Mouse, Rat	Clonality	Polyclonal
Applications	WB, IHC	Conjugation	Unconjugated
Form / Buffer	Liquid in 0.42% Potassium phosphate, 0.87% Sodium chloride, pH 7.3, 30% glycerol, and 0.01% sodium azide.		Storage at -20°C

BACKGROUND

Acts as a transcriptional activator. Required in the earliest stages in both axial midline development and left-right (LR) asymmetry specification. Binds to the minimal GLI-consensus sequence 5'-GGGTGGTC-3'.

APPLICATION

To ensure optimal assay performance, AREX recommends conducting reagent titration tailored to each testing system for optimal detection results.

WB	1:500 - 1:2000
IHC	1:50 - 1:200

*Results are sample-specific. Please refer to your local assay conditions and test parameters for reference.

PRODUCT OVERVIEW

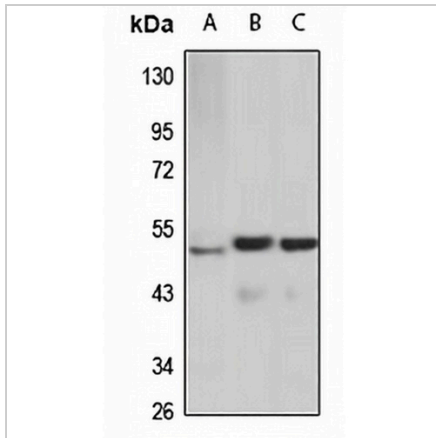
Description	Rabbit polyclonal antibody to ZIC3
Specificity	Recognizes endogenous levels of ZIC3 protein
Antibody Type	Primary antibody
Immunogen	Recombinant fusion protein of human ZIC3. The exact sequence is proprietary.
Purification	The antibody was purified by immunogen affinity chromatography.
Molecular Weight	Predicted: 50 kD; Observed: 51 kD
Form/Buffer	Liquid in 0.42% Potassium phosphate, 0.87% Sodium chloride, pH 7.3, 30% glycerol, and 0.01% sodium azide.
Alternative Names	ZNF203; Zinc finger protein ZIC 3; Zinc finger protein 203; Zinc finger protein of the cerebellum 3
Gene Symbol	ZIC3
Entrez Gene	7547(Human); 22773(Mouse)
SwissProt	O60481(Human); Q62521(Mouse)

*AREX continuously optimizes our products. Webpage content may not reflect the latest updates. For inquiries, please contact info@arexbio.com or your local distributor.

*Clone Number, Reactivity, Source/Host and Clonality can be found in the product name and Key Features section above.

DATASHEET**ZIC3 Rabbit Polyclonal Antibody**

CAT. NO. APA17355

DATA

Western blot analysis of ZIC3 expression in MCF7 (A), mouse brain (B), rat brain (C) whole cell lysates. (Predicted band size: 50 kD; Observed band size: 51 kD)

STORAGE

Store at 4°C short term. For long term storage, store at -20°C, avoiding freeze/thaw cycles.

NOTE

For Research Use Only. Not for diagnostic, therapeutics, prophylactic or in vivo use.