

**DATASHEET**

**ZMAT2 Rabbit Polyclonal Antibody**

CAT. NO. APA17356

**KEY FEATURES**

Target	ZMAT2	Source / Host	Rabbit
Reactivity	Human, Mouse, Rat	Clonality	Polyclonal
Applications	WB	Conjugation	Unconjugated
Form / Buffer	Liquid in 0.42% Potassium phosphate, 0.87% Sodium chloride, pH 7.3, 30% glycerol, and 0.01% sodium azide.	Storage	at-20°C

**BACKGROUND**

Involved in pre-mRNA splicing as a component of the spliceosome.

**APPLICATION**

To ensure optimal assay performance, AREX recommends conducting reagent titration tailored to each testing system for optimal detection results.

WB	1:500 - 1:2000
----	----------------

\*Results are sample-specific. Please refer to your local assay conditions and test parameters for reference.

**PRODUCT OVERVIEW**

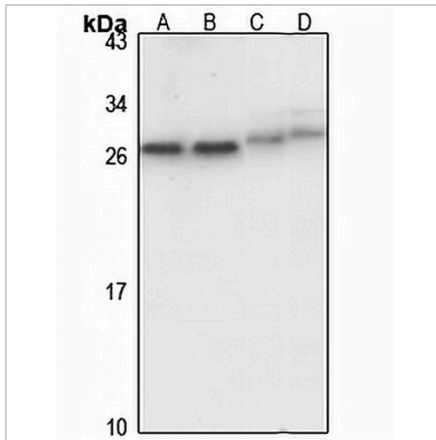
Description	Rabbit polyclonal antibody to ZMAT2
Specificity	Recognizes endogenous levels of ZMAT2 protein
Antibody Type	Primary antibody
Immunogen	Recombinant fusion protein of human ZMAT2. The exact sequence is proprietary.
Purification	The antibody was purified by immunogen affinity chromatography.
Molecular Weight	Predicted: 23 kD; Observed: 27 kD
Form/Buffer	Liquid in 0.42% Potassium phosphate, 0.87% Sodium chloride, pH 7.3, 30% glycerol, and 0.01% sodium azide.
Alternative Names	Zinc finger matrin-type protein 2
Gene Symbol	ZMAT2
Entrez Gene	153527(Human); 66492(Mouse)
SwissProt	Q96NC0(Human); Q9CPW7(Mouse)

\*AREX continuously optimizes our products. Webpage content may not reflect the latest updates. For inquiries, please contact [info@arexbio.com](mailto:info@arexbio.com) or your local distributor.

\*Clone Number, Reactivity, Source/Host and Clonality can be found in the product name and Key Features section above.

**DATASHEET****ZMAT2 Rabbit Polyclonal Antibody**

CAT. NO. APA17356

**DATA**

Western blot analysis of ZMAT2 expression in Jurkat (A), HeLa (B), mouse brain (C), rat brain (D) whole cell lysates. (Predicted band size: 23 kD; Observed band size: 27 kD)

**STORAGE**

Store at 4°C short term. For long term storage, store at -20°C, avoiding freeze/thaw cycles.

**NOTE**

For Research Use Only. Not for diagnostic, therapeutics, prophylactic or in vivo use.