

## DATASHEET

# ZNF2 Rabbit Polyclonal Antibody

CAT. NO. APA17363

### KEY FEATURES

Target	ZNF2	Source / Host	Rabbit
Reactivity	Human, Mouse, Rat	Clonality	Polyclonal
Applications	WB	Conjugation	Unconjugated
Form / Buffer	Liquid in 0.42% Potassium phosphate, 0.87% Sodium chloride, pH 7.3, 30% glycerol, and 0.01% sodium azide.		Storage at -20°C

### BACKGROUND

May be involved in transcriptional regulation.

### APPLICATION

To ensure optimal assay performance, AREX recommends conducting reagent titration tailored to each testing system for optimal detection results.

WB	1:500 - 1:2000
----	----------------

\*Results are sample-specific. Please refer to your local assay conditions and test parameters for reference.

### PRODUCT OVERVIEW

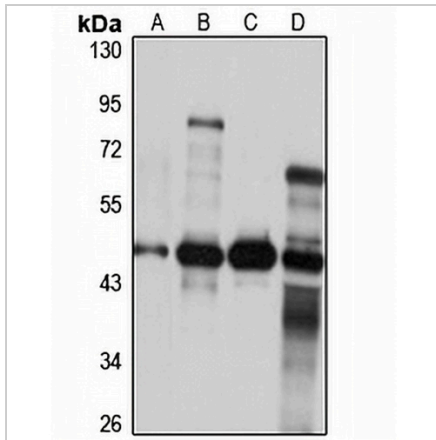
Description	Rabbit polyclonal antibody to ZNF2
Specificity	Recognizes endogenous levels of ZNF2 protein
Antibody Type	Primary antibody
Immunogen	Recombinant fusion protein of human ZNF2. The exact sequence is proprietary.
Purification	The antibody was purified by immunogen affinity chromatography.
Molecular Weight	Predicted: 44; Observed: 49 kD
Form/Buffer	Liquid in 0.42% Potassium phosphate, 0.87% Sodium chloride, pH 7.3, 30% glycerol, and 0.01% sodium azide.
Alternative Names	ZNF661; Zinc finger protein 2; Zinc finger protein 2.2; Zinc finger protein 661
Gene Symbol	ZNF2
Entrez Gene	7549(Human); 72180(Mouse)
SwissProt	Q9BSG1(Human); Q8BIQ3(Mouse)

\*AREX continuously optimizes our products. Webpage content may not reflect the latest updates. For inquiries, please contact [info@arexbio.com](mailto:info@arexbio.com) or your local distributor.

\*Clone Number, Reactivity, Source/Host and Clonality can be found in the product name and Key Features section above.

**DATASHEET****ZNF2 Rabbit Polyclonal Antibody**

CAT. NO. APA17363

**DATA**

Western blot analysis of ZNF2 expression in HepG2 (A), mouse testis (B), mouse eye (C), rat spleen (D) whole cell lysates. (Predicted band size: 44; 48 kD; Observed band size: 49 kD)

**STORAGE**

Store at 4°C short term. For long term storage, store at -20°C, avoiding freeze/thaw cycles.

**NOTE**

For Research Use Only. Not for diagnostic, therapeutics, prophylactic or in vivo use.