

## DATASHEET

# ZNRD1 Rabbit Polyclonal Antibody

CAT. NO. APA17389

### KEY FEATURES

|               |   |               |                     |
|---------------|---|---------------|---------------------|
| Target        | ZNRD1   | Source / Host | Rabbit              |
| Reactivity    | Human   | Clonality     | Polyclonal          |
| Applications  | WB  | Conjugation   | Unconjugated        |
| Form / Buffer | Liquid in 0.42% Potassium phosphate, 0.87% Sodium chloride, pH 7.3, 30% glycerol, and 0.01% sodium azide. |               | Storage<br>at -20°C |

### BACKGROUND

Core component of RNA polymerase I (Pol I), a DNA-dependent RNA polymerase which synthesizes ribosomal RNA precursors using the four ribonucleoside triphosphates as substrates. Can mediate Pol I proofreading of the nascent RNA transcript. Anchors into the Pol I active site to monitor transcription fidelity and cleave mis-incorporated 5'-ribonucleotides.

### APPLICATION

To ensure optimal assay performance, AREX recommends conducting reagent titration tailored to each testing system for optimal detection results.

|    |                |
|----|----------------|
| WB | 1:500 - 1:2000 |
|----|----------------|

\*Results are sample-specific. Please refer to your local assay conditions and test parameters for reference.

### PRODUCT OVERVIEW

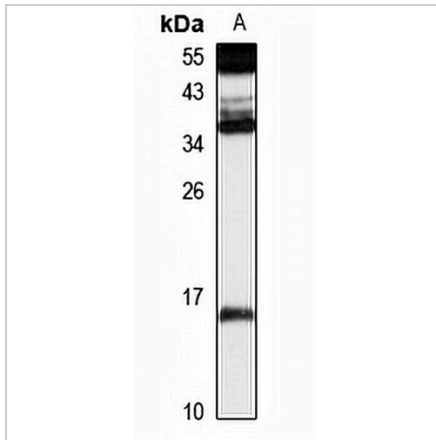
|                   |   |
|-------------------|---|
| Description       | Rabbit polyclonal antibody to ZNRD1   |
| Specificity       | Recognizes endogenous levels of ZNRD1 protein   |
| Antibody Type     | Primary antibody  |
| Immunogen         | Recombinant fusion protein of human ZNRD1. The exact sequence is proprietary.                             |
| Purification      | The antibody was purified by immunogen affinity chromatography.   |
| Molecular Weight  | Predicted: 13 kD; Observed: 14 kD   |
| Form/Buffer       | Liquid in 0.42% Potassium phosphate, 0.87% Sodium chloride, pH 7.3, 30% glycerol, and 0.01% sodium azide. |
| Alternative Names | RPA12; DNA-directed RNA polymerase I subunit RPA12; Zinc ribbon domain-containing protein 1               |
| Gene Symbol       | ZNRD1   |
| Entrez Gene       | 30834(Human)  |
| SwissProt         | Q9P1U0(Human)   |

\*AREX continuously optimizes our products. Webpage content may not reflect the latest updates. For inquiries, please contact [info@arexbio.com](mailto:info@arexbio.com) or your local distributor.

\*Clone Number, Reactivity, Source/Host and Clonality can be found in the product name and Key Features section above.

**DATASHEET****ZNRD1 Rabbit Polyclonal Antibody**

CAT. NO. APA17389

**DATA**

Western blot analysis of ZNRD1 expression in HEK293T (A) whole cell lysates. (Predicted band size: 13 kD; Observed band size: 14 kD)

**STORAGE**

Store at 4°C short term. For long term storage, store at -20°C, avoiding freeze/thaw cycles.

**NOTE**

For Research Use Only. Not for diagnostic, therapeutics, prophylactic or in vivo use.