

DATASHEET

ZFP29 Rabbit Polyclonal Antibody

CAT. NO. APA17393

KEY FEATURES

Target	ZFP29	Source / Host	Rabbit
Reactivity	Human, Mouse	Clonality	Polyclonal
Applications	WB	Conjugation	Unconjugated
Form / Buffer	Liquid in 0.42% Potassium phosphate, 0.87% Sodium chloride, pH 7.3, 30% glycerol, and 0.01% sodium azide.		Storage at -20°C

BACKGROUND

May be involved in transcriptional regulation during the post-meiotic stages of spermatogenesis.

APPLICATION

To ensure optimal assay performance, AREX recommends conducting reagent titration tailored to each testing system for optimal detection results.

WB	1:500 - 1:2000
----	----------------

*Results are sample-specific. Please refer to your local assay conditions and test parameters for reference.

PRODUCT OVERVIEW

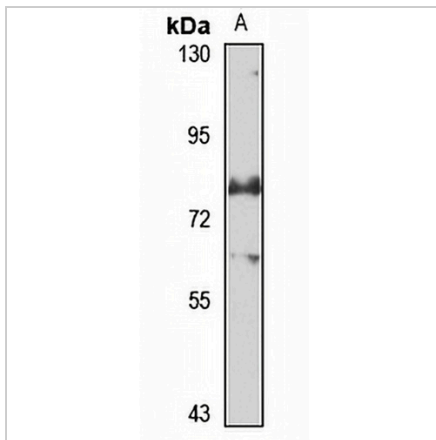
Description	Rabbit polyclonal antibody to ZFP29
Specificity	Recognizes endogenous levels of ZFP29 protein
Antibody Type	Primary antibody
Immunogen	KLH-conjugated synthetic peptide of human ZFP29. The exact sequence is proprietary.
Purification	The antibody was purified by immunogen affinity chromatography.
Molecular Weight	Predicted: 69 kD; Observed: 80 kD
Form/Buffer	Liquid in 0.42% Potassium phosphate, 0.87% Sodium chloride, pH 7.3, 30% glycerol, and 0.01% sodium azide.
Alternative Names	ZFP29; ZNF854; Zinc finger and SCAN domain-containing protein 2; Zinc finger protein 29 homolog; Zfp-29; Zinc finger protein 854
Gene Symbol	ZSCAN2
Entrez Gene	54993(Human); 22691(Mouse)
SwissProt	Q7Z7L9(Human); Q07230(Mouse)

*AREX continuously optimizes our products. Webpage content may not reflect the latest updates. For inquiries, please contact info@arexbio.com or your local distributor.

*Clone Number, Reactivity, Source/Host and Clonality can be found in the product name and Key Features section above.

DATASHEET**ZFP29 Rabbit Polyclonal Antibody**

CAT. NO. APA17393

DATA

Western blot analysis of ZFP29 expression in SHSY5Y (A) whole cell lysates. (Predicted band size: 69 kD; Observed band size: 80 kD)

STORAGE

Store at 4°C short term. For long term storage, store at -20°C, avoiding freeze/thaw cycles.

NOTE

For Research Use Only. Not for diagnostic, therapeutics, prophylactic or in vivo use.