

DATASHEET

MMP9 Rabbit Polyclonal Antibody

CAT. NO. APA17422

KEY FEATURES

Target	MMP9	Source / Host	Rabbit
Reactivity	Human, Mouse, Rat	Clonality	Polyclonal
Applications	WB, IHC, IF/ICC	Conjugation	Unconjugated
Form / Buffer	Liquid in 0.42% Potassium phosphate, 0.87% Sodium chloride, pH 7.3, 30% glycerol, and 0.01% sodium azide.		Storage at-20°C

BACKGROUND

Matrix metalloproteinase that plays an essential role in local proteolysis of the extracellular matrix and in leukocyte migration . Could play a role in bone osteoclastic resorption . Cleaves KiSS1 at a Gly-|-Leu bond . Cleaves NINJ1 to generate the Secreted ninjurin-1 form . Cleaves type IV and type V collagen into large C-terminal three quarter fragments and shorter N-terminal one quarter fragments . Degrades fibronectin but not laminin or Pz-peptide.

APPLICATION

To ensure optimal assay performance, AREX recommends conducting reagent titration tailored to each testing system for optimal detection results.

WB	1:500 - 1:1000
IHC	1:50 - 1:200
IF/ICC	1:50 - 1:200

*Results are sample-specific. Please refer to your local assay conditions and test parameters for reference.

PRODUCT OVERVIEW

Description	Rabbit polyclonal antibody to MMP9
Specificity	Recognizes endogenous levels of MMP9 protein.
Antibody Type	Primary antibody
Immunogen	Recombinant protein corresponding to human MMP9. The exact sequence is proprietary.
Purification	The antibody was purified by immunogen affinity chromatography.
Molecular Weight	Predicted: 78 kD; Observed: 84-100 kD
Form/Buffer	Liquid in 0.42% Potassium phosphate, 0.87% Sodium chloride, pH 7.3, 30% glycerol, and 0.01% sodium azide.
Alternative Names	CLG4B; Matrix metalloproteinase-9; MMP-9; 92 kDa gelatinase; 92 kDa type IV collagenase; Gelatinase B; GELB
Gene Symbol	MMP9
Entrez Gene	4318(Human); 17395(Mouse); 81687(Rat)
SwissProt	P14780(Human); P41245(Mouse); P50282(Rat)

*AREX continuously optimizes our products. Webpage content may not reflect the latest updates. For inquiries, please contact info@arexbio.com or your local distributor.

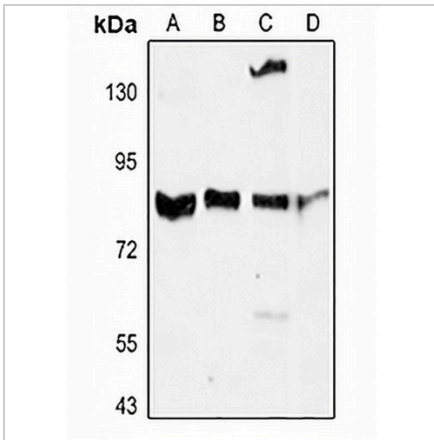
*Clone Number, Reactivity, Source/Host and Clonality can be found in the product name and Key Features section above.

DATASHEET

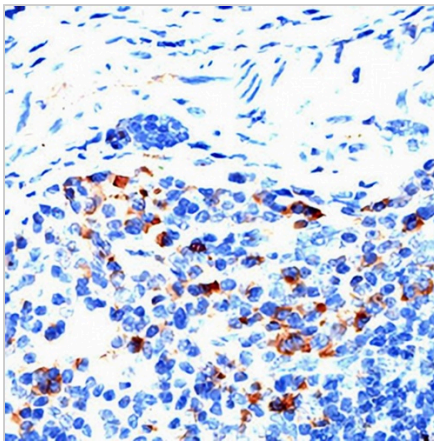
MMP9 Rabbit Polyclonal Antibody

CAT. NO. APA17422

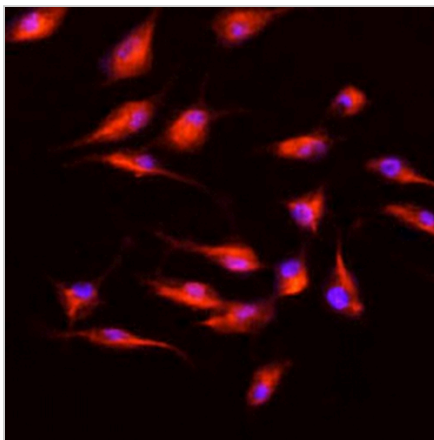
DATA



Western blot analysis of MMP9 expression in K562 (A), Raji (B), mouse brain (C), rat kidney (D) whole cell lysates. (Predicted band size: 78 kD; Observed band size: 84-100 kD)



Immunohistochemical analysis of MMP9 staining in mouse spleen formalin fixed paraffin embedded tissue section. The section was pre-treated using heat mediated antigen retrieval with sodium citrate buffer (pH 6.0). The section was then incubated with the antibody at room temperature and detected using an HRP conjugated compact polymer system. DAB was used as the chromogen. The section was then counterstained with haematoxylin and mounted with DPX.



Immunofluorescent analysis of MMP9 staining in L929 cells. Formalin-fixed cells were permeabilized with 0.1% Triton X-100 in TBS for 5-10 minutes and blocked with 3% BSA-PBS for 30 minutes at room temperature. Cells were probed with the primary antibody in 3% BSA-PBS and incubated overnight at 4 °C in a humidified chamber. Cells were washed with PBST and incubated with a AREX® Fluor 594-conjugated secondary antibody (red) in PBS at room temperature in the dark. DAPI was used to stain the cell nuclei (blue).

STORAGE

Store at 4°C short term. For long term storage, store at -20°C, avoiding freeze/thaw cycles.

NOTE

For Research Use Only. Not for diagnostic, therapeutics, prophylactic or in vivo use.