

**DATASHEET**

**EPO Receptor Rabbit Polyclonal Antibody**

CAT. NO. APA17427

**KEY FEATURES**

Target	EPO Receptor	Source / Host	Rabbit
Reactivity	Human, Mouse, Rat	Clonality	Polyclonal
Applications	WB, IF/ICC	Conjugation	Unconjugated
Form / Buffer	Liquid in 0.42% Potassium phosphate, 0.87% Sodium chloride, pH 7.3, 30% glycerol, and 0.01% sodium azide.		Storage at -20°C

**BACKGROUND**

Receptor for erythropoietin, which mediates erythropoietin-induced erythroblast proliferation and differentiation . Upon EPO stimulation, EPOR dimerizes triggering the JAK2/STAT5 signaling cascade . In some cell types, can also activate STAT1 and STAT3 . May also activate the LYN tyrosine kinase .

**APPLICATION**

To ensure optimal assay performance, AREX recommends conducting reagent titration tailored to each testing system for optimal detection results.

WB	1:500 - 1:1000
IF/ICC	1:50 - 1:200

\*Results are sample-specific. Please refer to your local assay conditions and test parameters for reference.

**PRODUCT OVERVIEW**

Description	Rabbit polyclonal antibody to EPO Receptor
Specificity	Recognizes endogenous levels of EPO Receptor protein.
Antibody Type	Primary antibody
Immunogen	Recombinant protein corresponding to human EPO Receptor. The exact sequence is proprietary.
Purification	The antibody was purified by immunogen affinity chromatography.
Molecular Weight	Predicted: 26; Observed: 60 kD
Form/Buffer	Liquid in 0.42% Potassium phosphate, 0.87% Sodium chloride, pH 7.3, 30% glycerol, and 0.01% sodium azide.
Alternative Names	Erythropoietin receptor; EPO-R
Gene Symbol	EPOR
Entrez Gene	2057(Human); 13857(Mouse)
SwissProt	P19235(Human); P14753(Mouse); Q07303(Rat)

\*AREX continuously optimizes our products. Webpage content may not reflect the latest updates. For inquiries, please contact [info@arexbio.com](mailto:info@arexbio.com) or your local distributor.

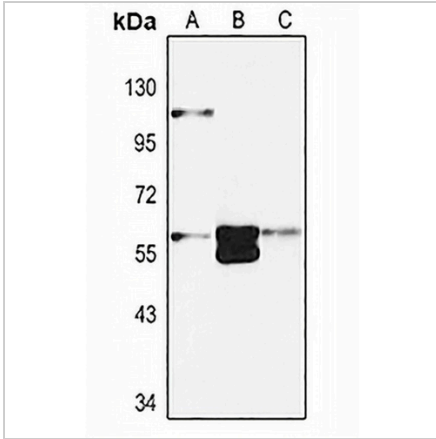
\*Clone Number, Reactivity, Source/Host and Clonality can be found in the product name and Key Features section above.

**DATASHEET**

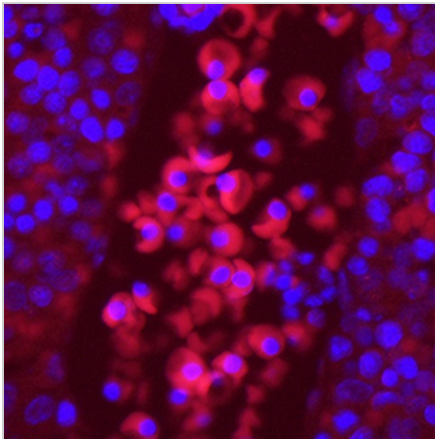
**EPO Receptor Rabbit Polyclonal Antibody**

CAT. NO. APA17427

**DATA**



Western blot analysis of EPO Receptor expression in K562 (A), mouse kidney (B), rat liver (C) whole cell lysates. (Predicted band size: 26; 35; 55 kD; Observed band size: 60 kD)



Immunofluorescent analysis of EPO Receptor staining in mouse fetal cells. Formalin-fixed cells were permeabilized with 0.1% Triton X-100 in TBS for 5-10 minutes and blocked with 3% BSA-PBS for 30 minutes at room temperature. Cells were probed with the primary antibody in 3% BSA-PBS and incubated overnight at 4 °C in a humidified chamber. Cells were washed with PBST and incubated with a AREX® Fluor 594-conjugated secondary antibody (red) in PBS at room temperature in the dark.

**STORAGE**

Store at 4°C short term. For long term storage, store at -20°C, avoiding freeze/thaw cycles.

**NOTE**

For Research Use Only. Not for diagnostic, therapeutics, prophylactic or in vivo use.