

DATASHEET

MCOLN2 Rabbit Polyclonal Antibody

CAT. NO. APA17435

KEY FEATURES

Target	MCOLN2	Source / Host	Rabbit
Reactivity	Human, Mouse	Clonality	Polyclonal
Applications	WB	Conjugation	Unconjugated
Form / Buffer	Liquid in 0.42% Potassium phosphate, 0.87% Sodium chloride, pH 7.3, 30% glycerol, and 0.01% sodium azide.		Storage at -20°C

BACKGROUND

Nonselective cation channel probably playing a role in the regulation of membrane trafficking events. Acts as a Ca(2+)-permeable cation channel with inwardly rectifying activity -permeable cation channel with inwardly rectifying activity . May activate ARF6 and be involved in the trafficking of GPI-anchored cargo proteins to the cell surface via the ARF6-regulated recycling pathway . May play a role in immune processes. In adaptive immunity, TRPML2 and TRPML1 may play redundant roles in the function of the specialized lysosomes of B cells . In the innate immune response, may play a role in the regulation of chemokine secretion and macrophage migration .

APPLICATION

To ensure optimal assay performance, AREX recommends conducting reagent titration tailored to each testing system for optimal detection results.

WB	1:500 - 1:1000
----	----------------

*Results are sample-specific. Please refer to your local assay conditions and test parameters for reference.

PRODUCT OVERVIEW

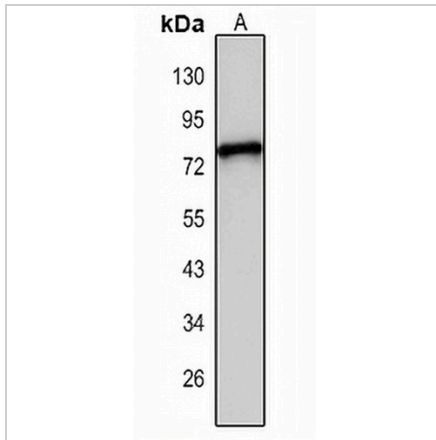
Description	Rabbit polyclonal antibody to MCOLN2
Specificity	Recognizes endogenous levels of MCOLN2 protein.
Antibody Type	Primary antibody
Immunogen	Recombinant protein corresponding to human MCOLN2. The exact sequence is proprietary.
Purification	The antibody was purified by immunogen affinity chromatography.
Molecular Weight	Predicted: 65 kD; Observed: 75 kD
Form/Buffer	Liquid in 0.42% Potassium phosphate, 0.87% Sodium chloride, pH 7.3, 30% glycerol, and 0.01% sodium azide.
Alternative Names	Mucolipin-2
Gene Symbol	MCOLN2
Entrez Gene	255231(Human)
SwissProt	Q8IZK6(Human)

*AREX continuously optimizes our products. Webpage content may not reflect the latest updates. For inquiries, please contact info@arexbio.com or your local distributor.

*Clone Number, Reactivity, Source/Host and Clonality can be found in the product name and Key Features section above.

DATASHEET**MCOLN2 Rabbit Polyclonal Antibody**

CAT. NO. APA17435

DATA

Western blot analysis of MCOLN2 expression in THP1 (A) whole cell lysates. (Predicted band size: 65 kD; Observed band size: 75 kD)

STORAGE

Store at 4°C short term. For long term storage, store at -20°C, avoiding freeze/thaw cycles.

NOTE

For Research Use Only. Not for diagnostic, therapeutics, prophylactic or in vivo use.