

DATASHEET

NOD2 Rabbit Polyclonal Antibody

CAT. NO. APA17445

KEY FEATURES

Target	NOD2	Source / Host	Rabbit
Reactivity	Human	Clonality	Polyclonal
Applications	WB, IHC	Conjugation	Unconjugated
Form / Buffer	Liquid in 0.42% Potassium phosphate, 0.87% Sodium chloride, pH 7.3, 30% glycerol, and 0.01% sodium azide.		Storage at-20°C

BACKGROUND

Pattern recognition receptor (PRR) that detects bacterial peptidoglycan fragments and other danger signals and plays an important role in gastrointestinal immunity that detects bacterial peptidoglycan fragments and other danger signals and plays an important role in gastrointestinal immunity . Specifically activated by muramyl dipeptide (MDP), a fragment of bacterial peptidoglycan found in every bacterial peptidoglycan type . NOD2 specifically recognizes and binds 6-O-phospho-MDP, the phosphorylated form of MDP, which is generated by NAGK . 6-O-phospho-MDP-binding triggers oligomerization that facilitates the binding and subsequent activation of the proximal adapter receptor-interacting RIPK2 .

APPLICATION

To ensure optimal assay performance, AREX recommends conducting reagent titration tailored to each testing system for optimal detection results.

WB	1:500 - 1:1000
IHC	1:50 - 1:200

*Results are sample-specific. Please refer to your local assay conditions and test parameters for reference.

PRODUCT OVERVIEW

Description	Rabbit polyclonal antibody to NOD2
Specificity	Recognizes endogenous levels of NOD2 protein.
Antibody Type	Primary antibody
Immunogen	Recombinant protein corresponding to human NOD2. The exact sequence is proprietary.
Purification	The antibody was purified by immunogen affinity chromatography.
Molecular Weight	Predicted: 22; Observed: 100 kD
Form/Buffer	Liquid in 0.42% Potassium phosphate, 0.87% Sodium chloride, pH 7.3, 30% glycerol, and 0.01% sodium azide.
Alternative Names	CARD15; IBD1; Nucleotide-binding oligomerization domain-containing protein 2; Caspase recruitment domain-containing protein 15; Inflammatory bowel disease protein 1
Gene Symbol	NOD2
Entrez Gene	64127(Human)
SwissProt	Q9HC29(Human); Q8K3Z0(Mouse)

*AREX continuously optimizes our products. Webpage content may not reflect the latest updates. For inquiries, please contact info@arexbio.com or your local distributor.

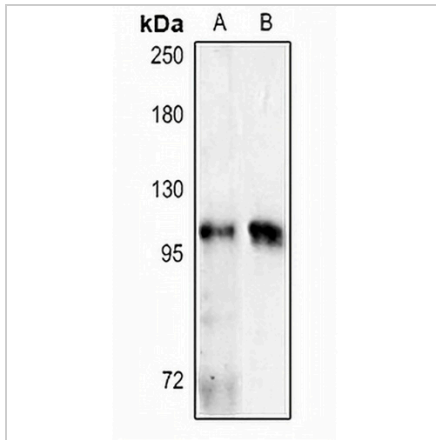
*Clone Number, Reactivity, Source/Host and Clonality can be found in the product name and Key Features section above.

DATASHEET

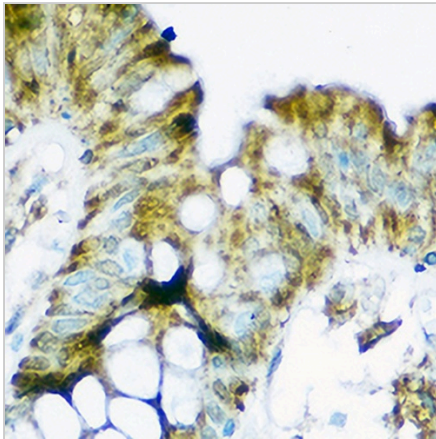
NOD2 Rabbit Polyclonal Antibody

CAT. NO. APA17445

DATA



Western blot analysis of NOD2 expression in mouse kidney (A), rat spleen (B) whole cell lysates. (Predicted band size: 22; 112; 115 kD; Observed band size: 100 kD)



Immunohistochemical analysis of NOD2 staining in human colon formalin fixed paraffin embedded tissue section. The section was pre-treated using heat mediated antigen retrieval with sodium citrate buffer (pH 6.0). The section was then incubated with the antibody at room temperature and detected using an HRP conjugated compact polymer system. DAB was used as the chromogen. The section was then counterstained with haematoxylin and mounted with DPX.

STORAGE

Store at 4°C short term. For long term storage, store at -20°C, avoiding freeze/thaw cycles.

NOTE

For Research Use Only. Not for diagnostic, therapeutics, prophylactic or in vivo use.