

DATASHEET

POTEE Rabbit Polyclonal Antibody

CAT. NO. APA17462

KEY FEATURES

| | | | |
|---------------|---|---------------|--------------------|
| Target | POTEE | Source / Host | Rabbit |
| Reactivity | Human | Clonality | Polyclonal |
| Applications | WB, FC | Conjugation | Unconjugated |
| Form / Buffer | Liquid in 0.42% Potassium phosphate, 0.87% Sodium chloride, pH 7.3, 30% glycerol, and 0.01% sodium azide. | | Storage at-20°C |

BACKGROUND

POTE ankyrin domain family member E (POTEE), also known as ANKRD26-like family C member 1A, Prostate, ovary, testis-expressed protein on chromosome 2, POTE-2. In the N-terminal section; belongs to the POTE family; In the C-terminal section; belongs to the actin family

APPLICATION

To ensure optimal assay performance, AREX recommends conducting reagent titration tailored to each testing system for optimal detection results.

| | |
|----|----------------|
| WB | 1:500 - 1:1000 |
| FC | 1:10 - 1:30 |

*Results are sample-specific. Please refer to your local assay conditions and test parameters for reference.

PRODUCT OVERVIEW

| | |
|-------------------|--|
| Description | Rabbit polyclonal antibody to POTEE |
| Specificity | Recognizes endogenous levels of POTEE protein. |
| Antibody Type | Primary antibody |
| Immunogen | KLH-conjugated synthetic peptide encompassing a sequence within the Central region of human POTEE. The exact sequence is proprietary. |
| Purification | The antibody was purified by immunogen affinity chromatography. |
| Molecular Weight | Predicted: 121 kD; Observed: 135 kD |
| Form/Buffer | Liquid in 0.42% Potassium phosphate, 0.87% Sodium chloride, pH 7.3, 30% glycerol, and 0.01% sodium azide. |
| Alternative Names | A26C1A; POTE2; POTE ankyrin domain family member E; ANKRD26-like family C member 1A; Prostate, ovary, testis-expressed protein on chromosome 2; POTE-2 |
| Gene Symbol | POTEE |
| Entrez Gene | 445582(Human) |
| SwissProt | Q6S8J3(Human) |

*AREX continuously optimizes our products. Webpage content may not reflect the latest updates. For inquiries, please contact info@arexbio.com or your local distributor.

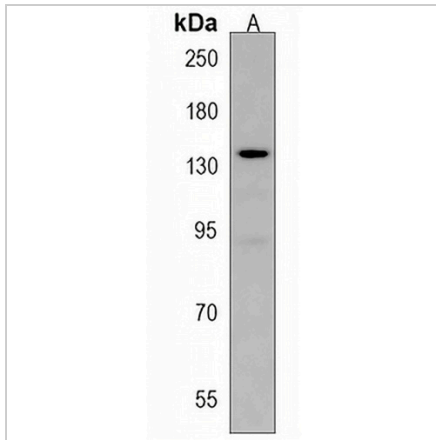
*Clone Number, Reactivity, Source/Host and Clonality can be found in the product name and Key Features section above.

DATASHEET

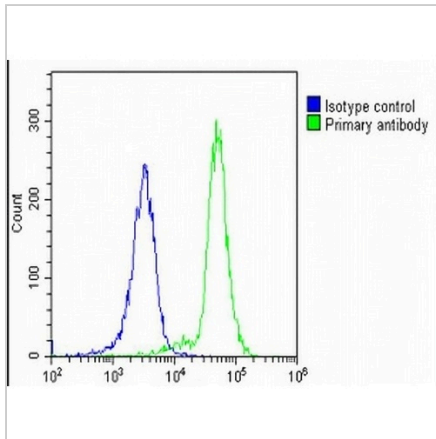
POTEE Rabbit Polyclonal Antibody

CAT. NO. APA17462

DATA



Western blot analysis of POTEE expression in LNCap (A) whole cell lysates. (Predicted band size: 121 kD; Observed band size: 135 kD)



Flow cytometric analysis of K562 cells using Anti-POTEE Antibody. The cells were fixed with 2% paraformaldehyde (10 min) and then permeabilized with 90% methanol for 10 min. The cells were incubated in 2% bovine serum albumin to block non-specific protein-protein interactions followed by the antibody at 37 °C for 60 min. The secondary antibody Goat Anti-Rabbit IgG (H&L) - AREX® Fluor 488 was incubated at 37 °C for 40 min. Isotype control antibody (blue line) was used under the same condition.

STORAGE

Store at 4°C short term. For long term storage, store at -20°C, avoiding freeze/thaw cycles.

NOTE

For Research Use Only. Not for diagnostic, therapeutics, prophylactic or in vivo use.