

DATASHEET

SLC7A13 Rabbit Polyclonal Antibody

CAT. NO. APA17464

KEY FEATURES

Target	SLC7A13	Source / Host	Rabbit
Reactivity	Human, Mouse	Clonality	Polyclonal
Applications	WB	Conjugation	Unconjugated
Form / Buffer	Liquid in 0.42% Potassium phosphate, 0.87% Sodium chloride, pH 7.3, 30% glycerol, and 0.01% sodium azide.		Storage at-20°C

BACKGROUND

Associates with SLC3A1/rBAT to form a functional heterodimeric complex that transports anionic and neutral amino acids across the apical plasma membrane of renal epithelium. Preferentially mediates exchange transport, but can also operate via facilitated diffusion. May act as a major transporter for L-cystine in late proximal tubules, ensuring its reabsorption from the luminal fluid in exchange for cytosolic L-glutamate or L-aspartate.

APPLICATION

To ensure optimal assay performance, AREX recommends conducting reagent titration tailored to each testing system for optimal detection results.

WB	1:500 - 1:1000
----	----------------

*Results are sample-specific. Please refer to your local assay conditions and test parameters for reference.

PRODUCT OVERVIEW

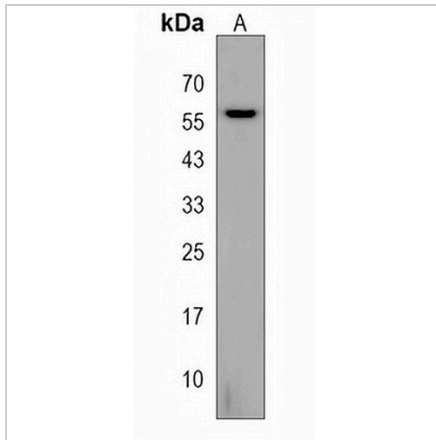
Description	Rabbit polyclonal antibody to SLC7A13
Specificity	Recognizes endogenous levels of SLC7A13 protein.
Antibody Type	Primary antibody
Immunogen	KLH-conjugated synthetic peptide encompassing a sequence within the Central region of human SLC7A13. The exact sequence is proprietary.
Purification	The antibody was purified by immunogen affinity chromatography.
Molecular Weight	Predicted: 52 kD; Observed: 56 kD
Form/Buffer	Liquid in 0.42% Potassium phosphate, 0.87% Sodium chloride, pH 7.3, 30% glycerol, and 0.01% sodium azide.
Alternative Names	AGT1; XAT2; Solute carrier family 7 member 13; Sodium-independent aspartate/glutamate transporter 1; X-amino acid transporter 2
Gene Symbol	SLC7A13
Entrez Gene	157724(Human); 74087(Mouse)
SwissProt	Q8TCU3(Human); Q91WN3(Mouse)

*AREX continuously optimizes our products. Webpage content may not reflect the latest updates. For inquiries, please contact info@arexbio.com or your local distributor.

*Clone Number, Reactivity, Source/Host and Clonality can be found in the product name and Key Features section above.

DATASHEET**SLC7A13 Rabbit Polyclonal Antibody**

CAT. NO. APA17464

DATA

Western blot analysis of SLC7A13 expression in RPMI 8226 (A) whole cell lysates.
(Predicted band size: 52 kD; Observed band size: 56 kD)

STORAGE

Store at 4°C short term. For long term storage, store at -20°C, avoiding freeze/thaw cycles.

NOTE

For Research Use Only. Not for diagnostic, therapeutics, prophylactic or in vivo use.