

DATASHEET

SLC43A2 Rabbit Polyclonal Antibody

CAT. NO. APA17468

KEY FEATURES

| | | | |
|---------------|---|---------------|--------------------|
| Target | SLC43A2 | Source / Host | Rabbit |
| Reactivity | Human, Mouse | Clonality | Polyclonal |
| Applications | WB, FC | Conjugation | Unconjugated |
| Form / Buffer | Liquid in 0.42% Potassium phosphate, 0.87% Sodium chloride, pH 7.3, 30% glycerol, and 0.01% sodium azide. | | Storage at-20°C |

BACKGROUND

Uniporter that mediates the transport of the stereospecific L-phenylalanine, L-methionine and L-branched-chain amino acids, between the extracellular space and the cytoplasm and may control the transepithelial (re)absorption of neutral amino acid in kidney and small intestine absorption of neutral amino acid in kidney and small intestine . The transport activity is mediated through facilitated diffusion and is sodium ions-, chloride ions- and pH-independent .

APPLICATION

To ensure optimal assay performance, AREX recommends conducting reagent titration tailored to each testing system for optimal detection results.

| | |
|----|----------------|
| WB | 1:500 - 1:1000 |
| FC | 1:10 - 1:50 |

*Results are sample-specific. Please refer to your local assay conditions and test parameters for reference.

PRODUCT OVERVIEW

| | |
|-------------------|---|
| Description | Rabbit polyclonal antibody to SLC43A2 |
| Specificity | Recognizes endogenous levels of SLC43A2 protein. |
| Antibody Type | Primary antibody |
| Immunogen | KLH-conjugated synthetic peptide encompassing a sequence within the Central region of human SLC43A2. The exact sequence is proprietary. |
| Purification | The antibody was purified by immunogen affinity chromatography. |
| Molecular Weight | Predicted: 62 kD; Observed: 55 kD |
| Form/Buffer | Liquid in 0.42% Potassium phosphate, 0.87% Sodium chloride, pH 7.3, 30% glycerol, and 0.01% sodium azide. |
| Alternative Names | LAT4; Large neutral amino acids transporter small subunit 4; L-type amino acid transporter 4; Solute carrier family 43 member 2 |
| Gene Symbol | SLC43A2 |
| Entrez Gene | 124935(Human); 215113(Mouse) |
| SwissProt | Q8N370(Human); Q8CGA3(Mouse) |

*AREX continuously optimizes our products. Webpage content may not reflect the latest updates. For inquiries, please contact info@arexbio.com or your local distributor.

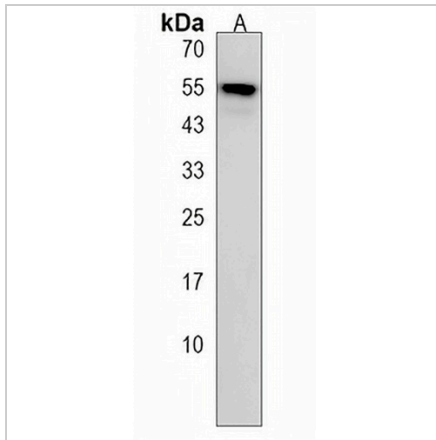
*Clone Number, Reactivity, Source/Host and Clonality can be found in the product name and Key Features section above.

DATASHEET

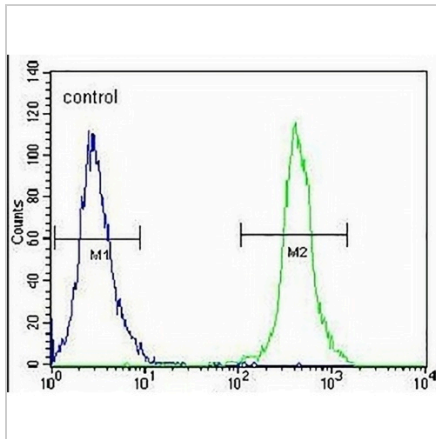
SLC43A2 Rabbit Polyclonal Antibody

CAT. NO. APA17468

DATA



Western blot analysis of SLC43A2 expression in mouse lung (A) whole cell lysates. (Predicted band size: 62 kD; Observed band size: 55 kD)



Flow cytometric analysis of Jurkat cells using Anti-SLC43A2 Antibody. The cells were fixed with 2% paraformaldehyde (10 min) and then permeabilized with 90% methanol for 10 min. The cells were incubated in 2% bovine serum albumin to block non-specific protein-protein interactions followed by the antibody at 37 °C for 60 min. The secondary antibody Goat Anti-Rabbit IgG (H&L) - AREX® Fluor 488 was incubated at 37 °C for 40 min. Isotype control antibody (blue line) was used under the same condition.

STORAGE

Store at 4°C short term. For long term storage, store at -20°C, avoiding freeze/thaw cycles.

NOTE

For Research Use Only. Not for diagnostic, therapeutics, prophylactic or in vivo use.