

DATASHEET

NIPAL4 Rabbit Polyclonal Antibody

CAT. NO. APA17472

KEY FEATURES

Target	NIPAL4	Source / Host	Rabbit
Reactivity	Human, Mouse	Clonality	Polyclonal
Applications	WB, IHC	Conjugation	Unconjugated
Form / Buffer	Liquid in 0.42% Potassium phosphate, 0.87% Sodium chloride, pH 7.3, 30% glycerol, and 0.01% sodium azide.		Storage at-20°C

BACKGROUND

Acts as a Mg(2+) transporter. Can also transport other divalent cations such as Ba(2+), Sr(2+) and Fe(2+) but to a much less extent than Mg(2+) . May be a receptor for ligands (trioxilins A3 and B3) from the hepoxilin pathway transporter. Can also transport other divalent cations such as Ba(2+), Sr(2+) and Fe(2+) but to a much less extent than Mg(2+) . May be a receptor for ligands (trioxilins A3 and B3) from the hepoxilin pathway .

APPLICATION

To ensure optimal assay performance, AREX recommends conducting reagent titration tailored to each testing system for optimal detection results.

WB	1:500 - 1:1000
IHC	1:50 - 1:200

*Results are sample-specific. Please refer to your local assay conditions and test parameters for reference.

PRODUCT OVERVIEW

Description	Rabbit polyclonal antibody to NIPAL4
Specificity	Recognizes endogenous levels of NIPAL4 protein.
Antibody Type	Primary antibody
Immunogen	KLH-conjugated synthetic peptide encompassing a sequence within the N-terminal region of human NIPAL4. The exact sequence is proprietary.
Purification	The antibody was purified by immunogen affinity chromatography.
Molecular Weight	Predicted: 50 kD; Observed: 48 kD
Form/Buffer	Liquid in 0.42% Potassium phosphate, 0.87% Sodium chloride, pH 7.3, 30% glycerol, and 0.01% sodium azide.
Alternative Names	ICHN; NIPA4; Magnesium transporter NIPA4; Ichthyin; NIPA-like protein 4; Non-imprinted in Prader-Willi/Angelman syndrome region protein 4
Gene Symbol	NIPAL4
Entrez Gene	348938(Human); 214112(Mouse)
SwissProt	Q0D2K0(Human); Q8BZF2(Mouse)

*AREX continuously optimizes our products. Webpage content may not reflect the latest updates. For inquiries, please contact info@arexbio.com or your local distributor.

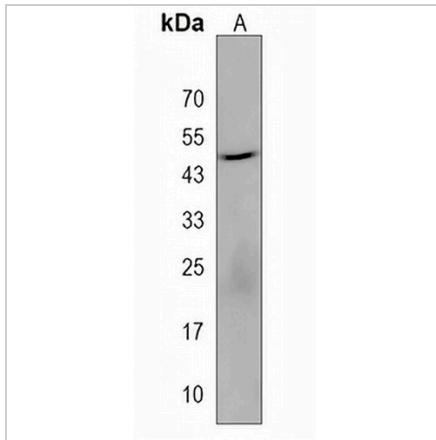
*Clone Number, Reactivity, Source/Host and Clonality can be found in the product name and Key Features section above.

DATASHEET

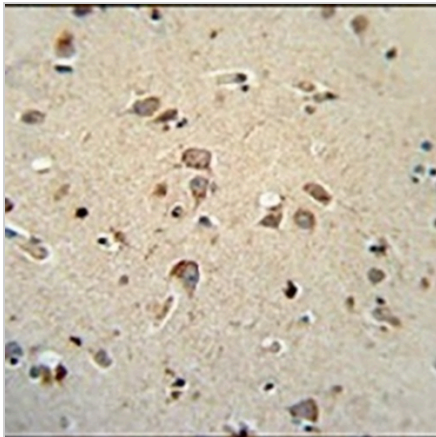
NIPAL4 Rabbit Polyclonal Antibody

CAT. NO. APA17472

DATA



Western blot analysis of NIPAL4 expression in human brain (A) whole cell lysates. (Predicted band size: 50 kD; Observed band size: 48 kD)



Immunohistochemical analysis of NIPAL4 staining in human brain formalin fixed paraffin embedded tissue section. The section was pre-treated using heat mediated antigen retrieval with sodium citrate buffer (pH 6.0). The section was then incubated with the antibody at room temperature and detected using an HRP conjugated compact polymer system. DAB was used as the chromogen. The section was then counterstained with haematoxylin and mounted with DPX.

STORAGE

Store at 4°C short term. For long term storage, store at -20°C, avoiding freeze/thaw cycles.

NOTE

For Research Use Only. Not for diagnostic, therapeutics, prophylactic or in vivo use.