

DATASHEET

BSCL2 Rabbit Polyclonal Antibody

CAT. NO. APA17474

KEY FEATURES

Target	BSCL2	Source / Host	Rabbit
Reactivity	Human, Mouse	Clonality	Polyclonal
Applications	WB, IHC	Conjugation	Unconjugated
Form / Buffer	Liquid in 0.42% Potassium phosphate, 0.87% Sodium chloride, pH 7.3, 30% glycerol, and 0.01% sodium azide.		Storage at -20°C

BACKGROUND

Plays a crucial role in the formation of lipid droplets (LDs) which are storage organelles at the center of lipid and energy homeostasis which are storage organelles at the center of lipid and energy homeostasis . In association with LDAH1, defines the sites of LD formation in the ER . Also required for growth and maturation of small nascent LDs into larger mature LDs . Mediates the formation and/or stabilization of endoplasmic reticulum-lipid droplets (ER-LD) contacts, facilitating protein and lipid delivery from the ER into growing LDs . Regulates the maturation of ZFYVE1-positive nascent LDs and the function of the RAB18-ZFYVE1 complex in mediating the formation of ER-LD contacts . Binds anionic phospholipids including phosphatidic acid .

APPLICATION

To ensure optimal assay performance, AREX recommends conducting reagent titration tailored to each testing system for optimal detection results.

WB	1:500 - 1:1000
IHC	1:50 - 1:200

*Results are sample-specific. Please refer to your local assay conditions and test parameters for reference.

PRODUCT OVERVIEW

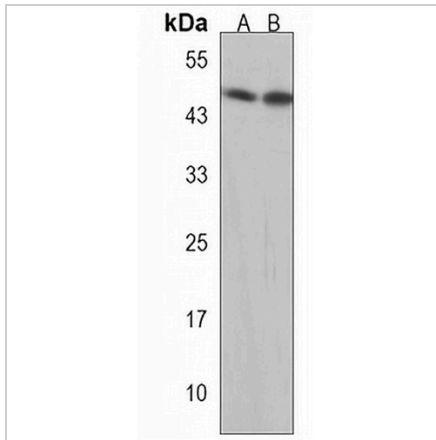
Description	Rabbit polyclonal antibody to BSCL2
Specificity	Recognizes endogenous levels of BSCL2 protein.
Antibody Type	Primary antibody
Immunogen	KLH-conjugated synthetic peptide encompassing a sequence within the N-terminal region of human BSCL2. The exact sequence is proprietary.
Purification	The antibody was purified by immunogen affinity chromatography.
Molecular Weight	Predicted: 44 kD; Observed: 47 kD
Form/Buffer	Liquid in 0.42% Potassium phosphate, 0.87% Sodium chloride, pH 7.3, 30% glycerol, and 0.01% sodium azide.
Alternative Names	Seipin; Bernardinelli-Seip congenital lipodystrophy type 2 protein
Gene Symbol	BSCL2
Entrez Gene	26580(Human); 14705(Mouse)
SwissProt	Q96G97(Human); Q9Z2E9(Mouse)

*AREX continuously optimizes our products. Webpage content may not reflect the latest updates. For inquiries, please contact info@arexbio.com or your local distributor.

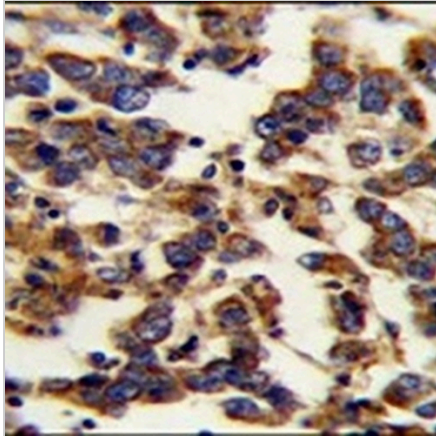
*Clone Number, Reactivity, Source/Host and Clonality can be found in the product name and Key Features section above.

DATASHEET**BSCL2 Rabbit Polyclonal Antibody**

CAT. NO. APA17474

DATA

Western blot analysis of BSCL2 expression in human testis (A), mouse testis (B) whole cell lysates. (Predicted band size: 44 kD; Observed band size: 47 kD)



Immunohistochemical analysis of BSCL2 staining in human testis carcinoma formalin fixed paraffin embedded tissue section. The section was pre-treated using heat mediated antigen retrieval with sodium citrate buffer (pH 6.0). The section was then incubated with the antibody at room temperature and detected using an HRP conjugated compact polymer system. DAB was used as the chromogen. The section was then counterstained with haematoxylin and mounted with DPX.

STORAGE

Store at 4°C short term. For long term storage, store at -20°C, avoiding freeze/thaw cycles.

NOTE

For Research Use Only. Not for diagnostic, therapeutics, prophylactic or in vivo use.