

DATASHEET

BACH2 Rabbit Polyclonal Antibody

CAT. NO. APA17475

KEY FEATURES

Target	BACH2	Source / Host	Rabbit
Reactivity	Human	Clonality	Polyclonal
Applications	WB, FC	Conjugation	Unconjugated
Form / Buffer	Liquid in 0.42% Potassium phosphate, 0.87% Sodium chloride, pH 7.3, 30% glycerol, and 0.01% sodium azide.		Storage at-20°C

BACKGROUND

Transcriptional regulator that acts as a repressor or activator . Binds to Maf recognition elements (MARE) . Plays an important role in coordinating transcription activation and repression by MAFK . Induces apoptosis in response to oxidative stress through repression of the antiapoptotic factor HMOX1 . Plays an important role in coordinating transcription activation and repression by MAFK . Induces apoptosis in response to oxidative stress through repression of the antiapoptotic factor HMOX1 . Positively regulates the nuclear import of actin . Is a key regulator of adaptive immunity, crucial for the maintenance of regulatory T-cell function and B-cell maturation .

APPLICATION

To ensure optimal assay performance, AREX recommends conducting reagent titration tailored to each testing system for optimal detection results.

WB	1:500 - 1:1000
FC	1:10 - 1:50

*Results are sample-specific. Please refer to your local assay conditions and test parameters for reference.

PRODUCT OVERVIEW

Description	Rabbit polyclonal antibody to BACH2
Specificity	Recognizes endogenous levels of BACH2 protein.
Antibody Type	Primary antibody
Immunogen	KLH-conjugated synthetic peptide encompassing a sequence within the C-terminal region of human BACH2. The exact sequence is proprietary.
Purification	The antibody was purified by immunogen affinity chromatography.
Molecular Weight	Predicted: 92 kD; Observed: 130 kD
Form/Buffer	Liquid in 0.42% Potassium phosphate, 0.87% Sodium chloride, pH 7.3, 30% glycerol, and 0.01% sodium azide.
Alternative Names	Transcription regulator protein BACH2; BTB and CNC homolog 2
Gene Symbol	BACH2
Entrez Gene	60468(Human)
SwissProt	Q9BYV9(Human)

*AREX continuously optimizes our products. Webpage content may not reflect the latest updates. For inquiries, please contact info@arexbio.com or your local distributor.

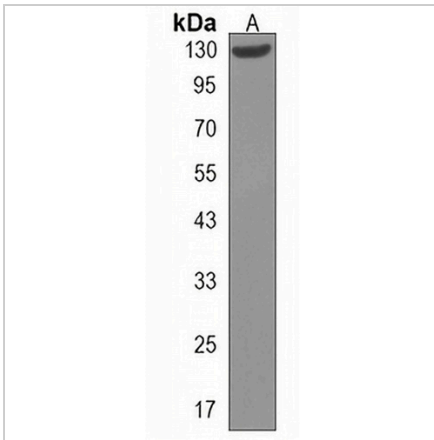
*Clone Number, Reactivity, Source/Host and Clonality can be found in the product name and Key Features section above.

DATASHEET

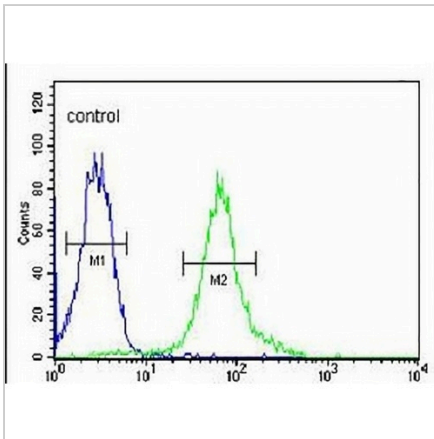
BACH2 Rabbit Polyclonal Antibody

CAT. NO. APA17475

DATA



Western blot analysis of BACH2 expression in Daudi (A) whole cell lysates. (Predicted band size: 92 kD; Observed band size: 130 kD)



Flow cytometric analysis of MDAMB435 cells using Anti-BACH2 Antibody. The cells were fixed with 2% paraformaldehyde (10 min) and then permeabilized with 90% methanol for 10 min. The cells were incubated in 2% bovine serum albumin to block non-specific protein-protein interactions followed by the antibody at 37 °C for 60 min. The secondary antibody Goat Anti-Rabbit IgG (H&L) - AREX® Fluor 488 was incubated at 37 °C for 40 min. Isotype control antibody (blue line) was used under the same condition.

STORAGE

Store at 4°C short term. For long term storage, store at -20°C, avoiding freeze/thaw cycles.

NOTE

For Research Use Only. Not for diagnostic, therapeutics, prophylactic or in vivo use.