

DATASHEET

MOCS1 Rabbit Polyclonal Antibody

CAT. NO. APA17488

KEY FEATURES

Target	MOCS1	Source / Host	Rabbit
Reactivity	Human, Mouse	Clonality	Polyclonal
Applications	WB, IHC	Conjugation	Unconjugated
Form / Buffer	Liquid in 0.42% Potassium phosphate, 0.87% Sodium chloride, pH 7.3, 30% glycerol, and 0.01% sodium azide.		Storage at -20°C

BACKGROUND

Isoform MOCS1A and isoform MOCS1B probably form a complex that catalyzes the conversion of 5'-GTP to cyclic pyranopterin monophosphate (cPMP). MOCS1A catalyzes the cyclization of GTP to (8S)-3',8-cyclo-7,8-dihydroguanosine 5'-triphosphate and MOCS1B catalyzes the subsequent conversion of (8S)-3',8-cyclo-7,8-dihydroguanosine 5'-triphosphate to cPMP.

APPLICATION

To ensure optimal assay performance, AREX recommends conducting reagent titration tailored to each testing system for optimal detection results.

WB	1:500 - 1:1000
IHC	1:50 - 1:200

*Results are sample-specific. Please refer to your local assay conditions and test parameters for reference.

PRODUCT OVERVIEW

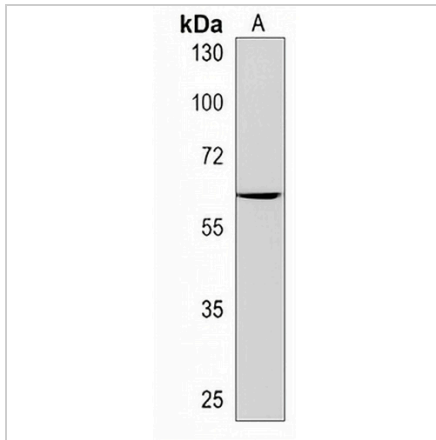
Description	Rabbit polyclonal antibody to MOCS1
Specificity	Recognizes endogenous levels of MOCS1 protein.
Antibody Type	Primary antibody
Immunogen	KLH-conjugated synthetic peptide encompassing a sequence within the C-terminal region of human MOCS1. The exact sequence is proprietary.
Purification	The antibody was purified by immunogen affinity chromatography.
Molecular Weight	Predicted: 70 kD; Observed: 60 kD
Form/Buffer	Liquid in 0.42% Potassium phosphate, 0.87% Sodium chloride, pH 7.3, 30% glycerol, and 0.01% sodium azide.
Alternative Names	Molybdenum cofactor biosynthesis protein 1; Cell migration-inducing gene 11 protein; Molybdenum cofactor synthesis-step 1 protein A-B
Gene Symbol	MOCS1
Entrez Gene	4337(Human); 56738(Mouse)
SwissProt	Q9NZB8(Human); Q5RKZ7(Mouse)

*AREX continuously optimizes our products. Webpage content may not reflect the latest updates. For inquiries, please contact info@arexbio.com or your local distributor.

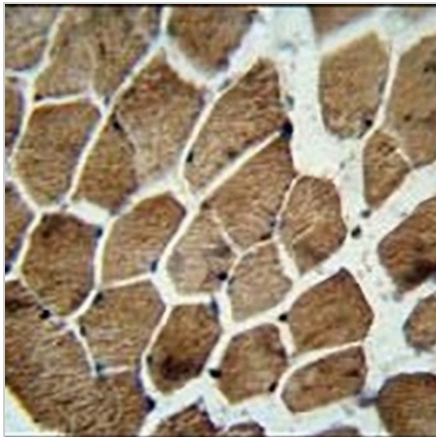
*Clone Number, Reactivity, Source/Host and Clonality can be found in the product name and Key Features section above.

DATASHEET**MOCS1 Rabbit Polyclonal Antibody**

CAT. NO. APA17488

DATA

Western blot analysis of MOCS1 expression in mouse spleen (A) whole cell lysates. (Predicted band size: 70 kD; Observed band size: 60 kD)



Immunohistochemical analysis of MOCS1 staining in human skeletal muscle formalin fixed paraffin embedded tissue section. The section was pre-treated using heat mediated antigen retrieval with sodium citrate buffer (pH 6.0). The section was then incubated with the antibody at room temperature and detected using an HRP conjugated compact polymer system. DAB was used as the chromogen. The section was then counterstained with haematoxylin and mounted with DPX.

STORAGE

Store at 4°C short term. For long term storage, store at -20°C, avoiding freeze/thaw cycles.

NOTE

For Research Use Only. Not for diagnostic, therapeutics, prophylactic or in vivo use.