

DATASHEET

PEMT Rabbit Polyclonal Antibody

CAT. NO. APA17489

KEY FEATURES

Target	PEMT	Source / Host	Rabbit
Reactivity	Human, Mouse	Clonality	Polyclonal
Applications	WB, IHC	Conjugation	Unconjugated
Form / Buffer	Liquid in 0.42% Potassium phosphate, 0.87% Sodium chloride, pH 7.3, 30% glycerol, and 0.01% sodium azide.		Storage at -20°C

BACKGROUND

Catalyzes the three sequential steps of the methylation pathway for the biosynthesis of phosphatidylcholine, a critical and essential component for membrane structure. Uses S-adenosylmethionine (S-adenosyl-L-methionine, SAM or AdoMet) as the methyl group donor for the methylation of phosphatidylethanolamine (1,2-diacyl-sn-glycero-3-phosphoethanolamine, PE) to phosphatidylmonomethylethanolamine (1,2-diacyl-sn-glycero-3-phospho-N-methylethanolamine, PMME), PMME to phosphatidyl dimethylethanolamine (1,2-diacyl-sn-glycero-3-phospho-N,N-dimethylethanolamine, PDME), and PDME to phosphatidylcholine (1,2-diacyl-sn-glycero-3-phosphocholine, PC), producing S-adenosyl-L-homocysteine in each step.

APPLICATION

To ensure optimal assay performance, AREX recommends conducting reagent titration tailored to each testing system for optimal detection results.

WB	1:500 - 1:1000
IHC	1:50 - 1:200

*Results are sample-specific. Please refer to your local assay conditions and test parameters for reference.

PRODUCT OVERVIEW

Description	Rabbit polyclonal antibody to PEMT
Specificity	Recognizes endogenous levels of PEMT protein.
Antibody Type	Primary antibody
Immunogen	KLH-conjugated synthetic peptide encompassing a sequence within the N-terminal region of human PEMT. The exact sequence is proprietary.
Purification	The antibody was purified by immunogen affinity chromatography.
Molecular Weight	Predicted: 22 kD; Observed: 22 kD
Form/Buffer	Liquid in 0.42% Potassium phosphate, 0.87% Sodium chloride, pH 7.3, 30% glycerol, and 0.01% sodium azide.
Alternative Names	PEMPT; PNMT; Phosphatidylethanolamine N-methyltransferase; PEAMT; PEMT; PEMT2
Gene Symbol	PEMT
Entrez Gene	10400(Human); 18618(Mouse)
SwissProt	Q9UBM1(Human); Q61907(Mouse)

*AREX continuously optimizes our products. Webpage content may not reflect the latest updates. For inquiries, please contact info@arex.bio or your local distributor.

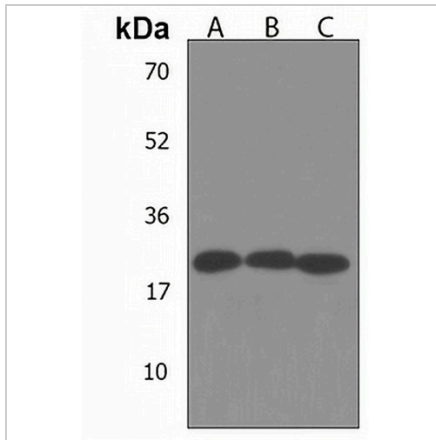
*Clone Number, Reactivity, Source/Host and Clonality can be found in the product name and Key Features section above.

DATASHEET

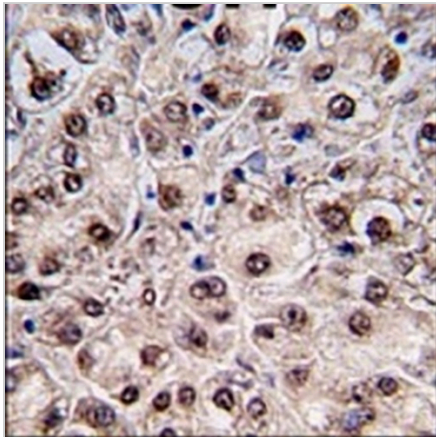
PEMT Rabbit Polyclonal Antibody

CAT. NO. APA17489

DATA



Western blot analysis of PEMT expression in CEM (A), rat L6 (B), human liver (C) whole cell lysates. (Predicted band size: 22 kD; Observed band size: 22 kD)



Immunohistochemical analysis of PEMT staining in human hepatocarcinoma formalin fixed paraffin embedded tissue section. The section was pre-treated using heat mediated antigen retrieval with sodium citrate buffer (pH 6.0). The section was then incubated with the antibody at room temperature and detected using an HRP conjugated compact polymer system. DAB was used as the chromogen. The section was then counterstained with haematoxylin and mounted with DPX.

STORAGE

Store at 4°C short term. For long term storage, store at -20°C, avoiding freeze/thaw cycles.

NOTE

For Research Use Only. Not for diagnostic, therapeutics, prophylactic or in vivo use.