

DATASHEET

ZDHHC1 Rabbit Polyclonal Antibody

CAT. NO. APA17496

KEY FEATURES

Target	ZDHHC1	Source / Host	Rabbit
Reactivity	Human, Mouse	Clonality	Polyclonal
Applications	WB	Conjugation	Unconjugated
Form / Buffer	Liquid in 0.42% Potassium phosphate, 0.87% Sodium chloride, pH 7.3, 30% glycerol, and 0.01% sodium azide.		Storage at -20°C

BACKGROUND

Palmitoyltransferase that catalyzes the addition of palmitate onto various protein substrates, such as NCDN and NLRP3 . Has a palmitoyltransferase activity toward NCDN and regulates NCDN association with endosome membranes through this palmitoylation . Acts as an activator of the NLRP3 inflammasome by mediating palmitoylation of 'Cys-130' and 'Cys-958' of NLRP3, thereby promoting NLRP3 phosphorylation and activation by NEK7 .

APPLICATION

To ensure optimal assay performance, AREX recommends conducting reagent titration tailored to each testing system for optimal detection results.

WB	1:500 - 1:1000
----	----------------

*Results are sample-specific. Please refer to your local assay conditions and test parameters for reference.

PRODUCT OVERVIEW

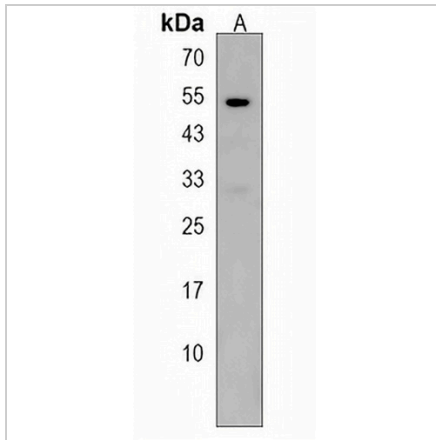
Description	Rabbit polyclonal antibody to ZDHHC1
Specificity	Recognizes endogenous levels of ZDHHC1 protein.
Antibody Type	Primary antibody
Immunogen	KLH-conjugated synthetic peptide encompassing a sequence within the N-terminal region of human ZDHHC1. The exact sequence is proprietary.
Purification	The antibody was purified by immunogen affinity chromatography.
Molecular Weight	Predicted: 54 kD; Observed: 54 kD
Form/Buffer	Liquid in 0.42% Potassium phosphate, 0.87% Sodium chloride, pH 7.3, 30% glycerol, and 0.01% sodium azide.
Alternative Names	C16orf1; ZNF377; Probable palmitoyltransferase ZDHHC1; DHHC domain-containing cysteine-rich protein 1; Zinc finger DHHC domain-containing protein 1; DHHC-1; Zinc finger protein 377
Gene Symbol	ZDHHC1
Entrez Gene	29800(Human); 70796(Mouse)
SwissProt	Q8WTX9(Human); Q8RON9(Mouse)

*AREX continuously optimizes our products. Webpage content may not reflect the latest updates. For inquiries, please contact info@arexbio.com or your local distributor.

*Clone Number, Reactivity, Source/Host and Clonality can be found in the product name and Key Features section above.

DATASHEET**ZDHHC1 Rabbit Polyclonal Antibody**

CAT. NO. APA17496

DATA

Western blot analysis of ZDHHC1 expression in Neuro2a (A) whole cell lysates. (Predicted band size: 54 kD; Observed band size: 54 kD)

STORAGE

Store at 4°C short term. For long term storage, store at -20°C, avoiding freeze/thaw cycles.

NOTE

For Research Use Only. Not for diagnostic, therapeutics, prophylactic or in vivo use.